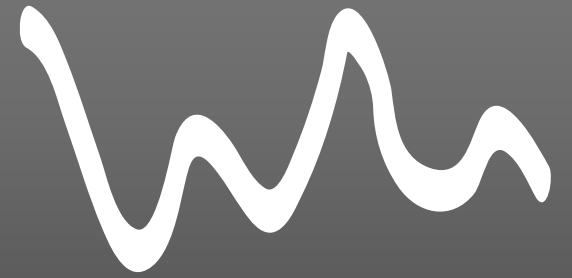


PARASEISMIC PROJECT



Yves Duchene

yduchene@greisch.com

Arnaud Deraemaeker

Arnaud.Deraemaeker@ulb.be

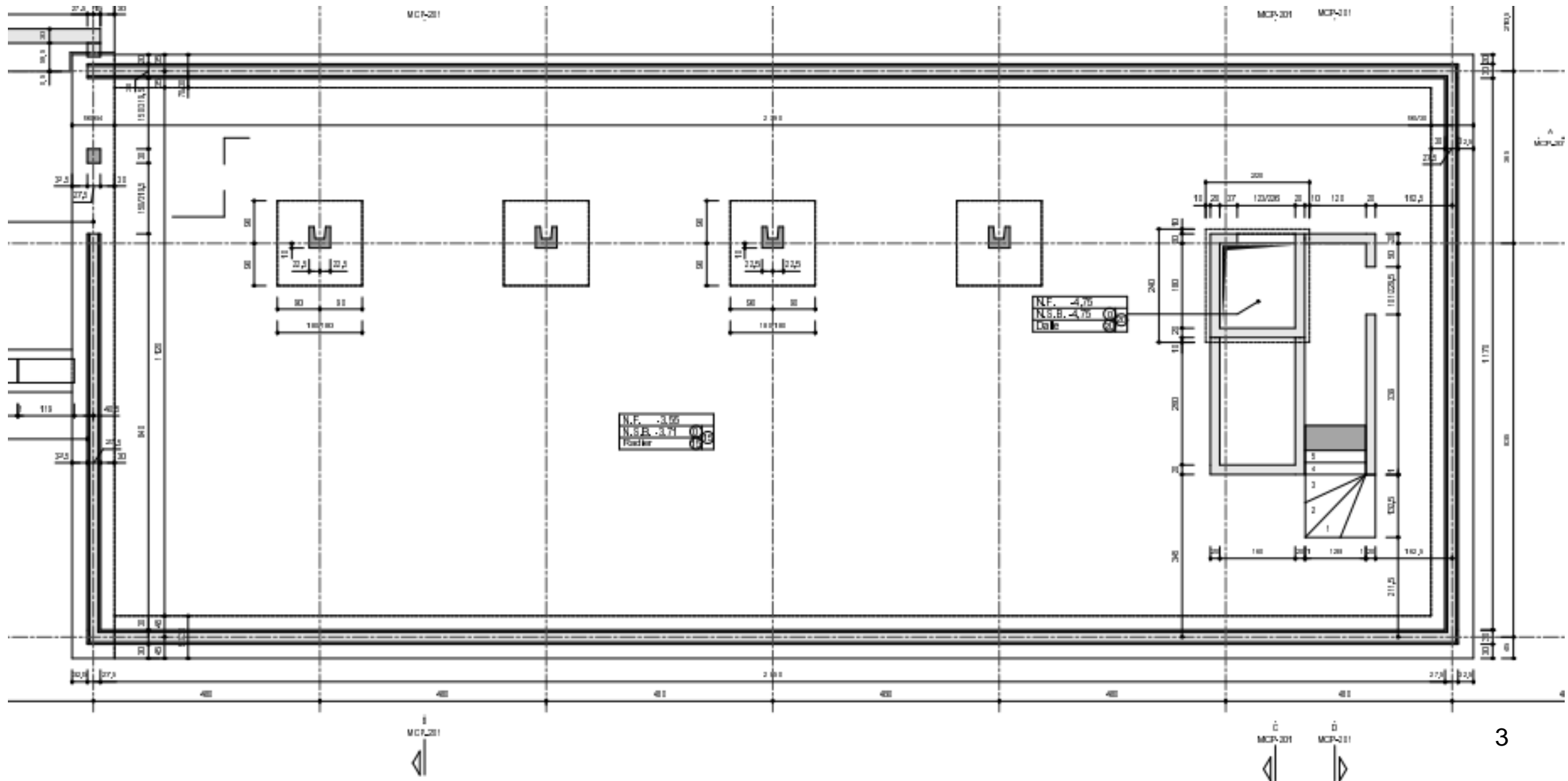
Parasismic verification of a building according to Eurocode 8

Make the seismic verification of the new building of the sports center located in Liege according to the Eurocode EN 1998-1

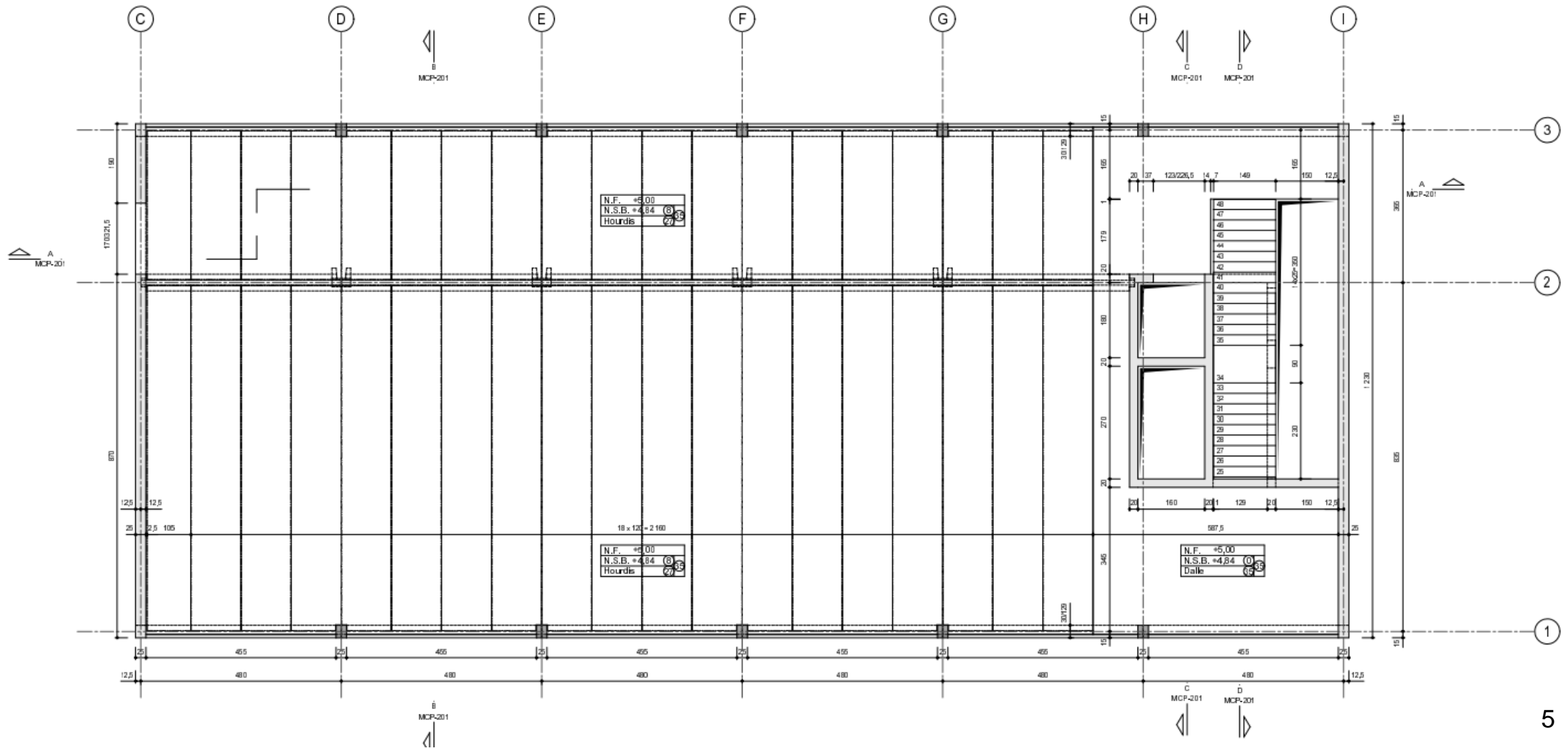
The building characteristics are:

- Rectangular building of dimensions 39 X 15 m
- 1 ground level + 1 level and an underground level → 3 levels
- Columns and central nucleus in concrete. All the other walls are in masonry except the underground walls which are in concrete
- The slabs are in concrete
- The building is located in Liege with a soil class C according to EN 1998-1
- The building is an office building with meeting rooms
- Concrete is C 30/37 with an instantaneous non cracked Young's modulus of 35 000 N/mm²
- The dead masses of the floor are 600 kg/m² and 500 kg/m² for the roof
- The live loads are 500 kg/m²
- The vertical component of the earthquake can be neglected

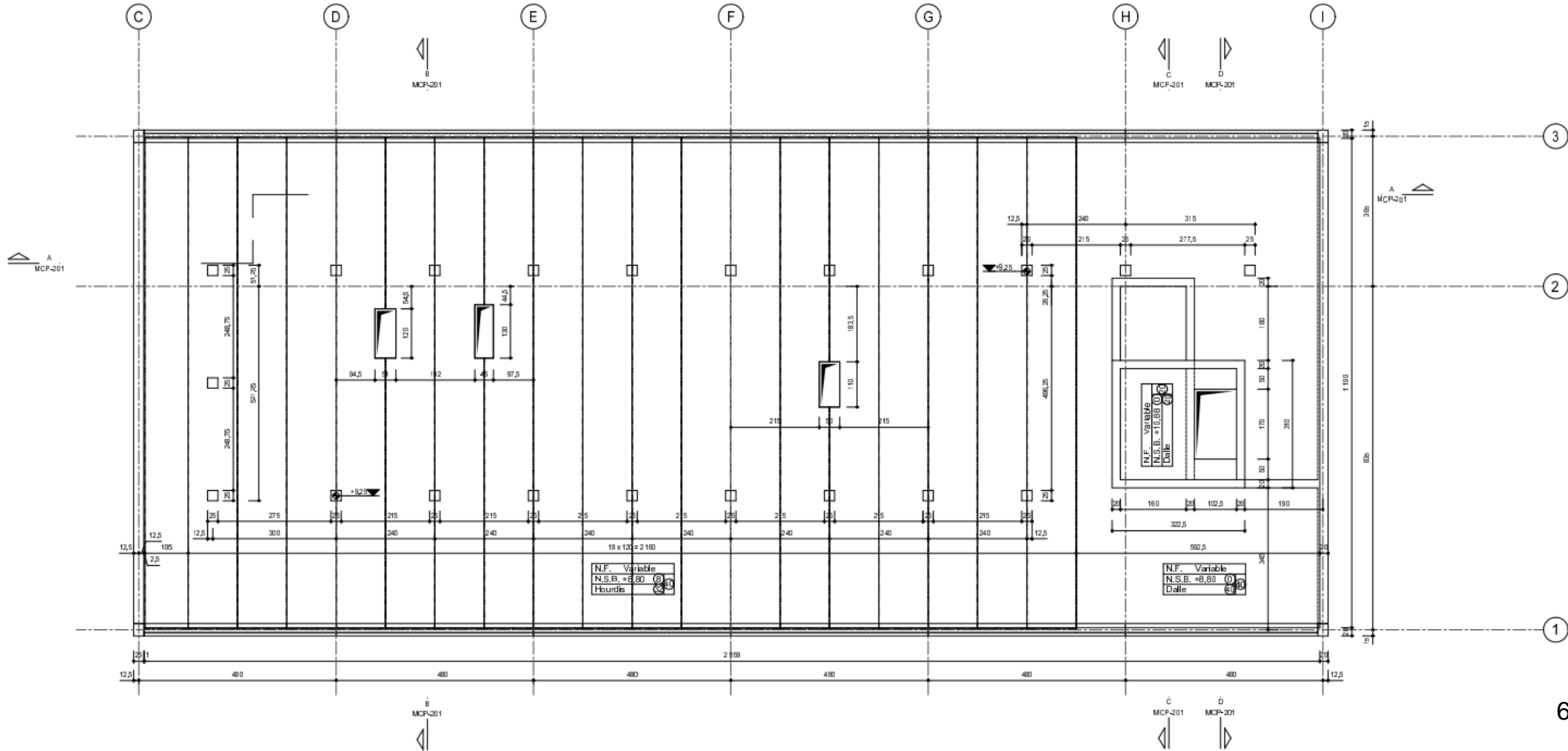
Plane view - underground



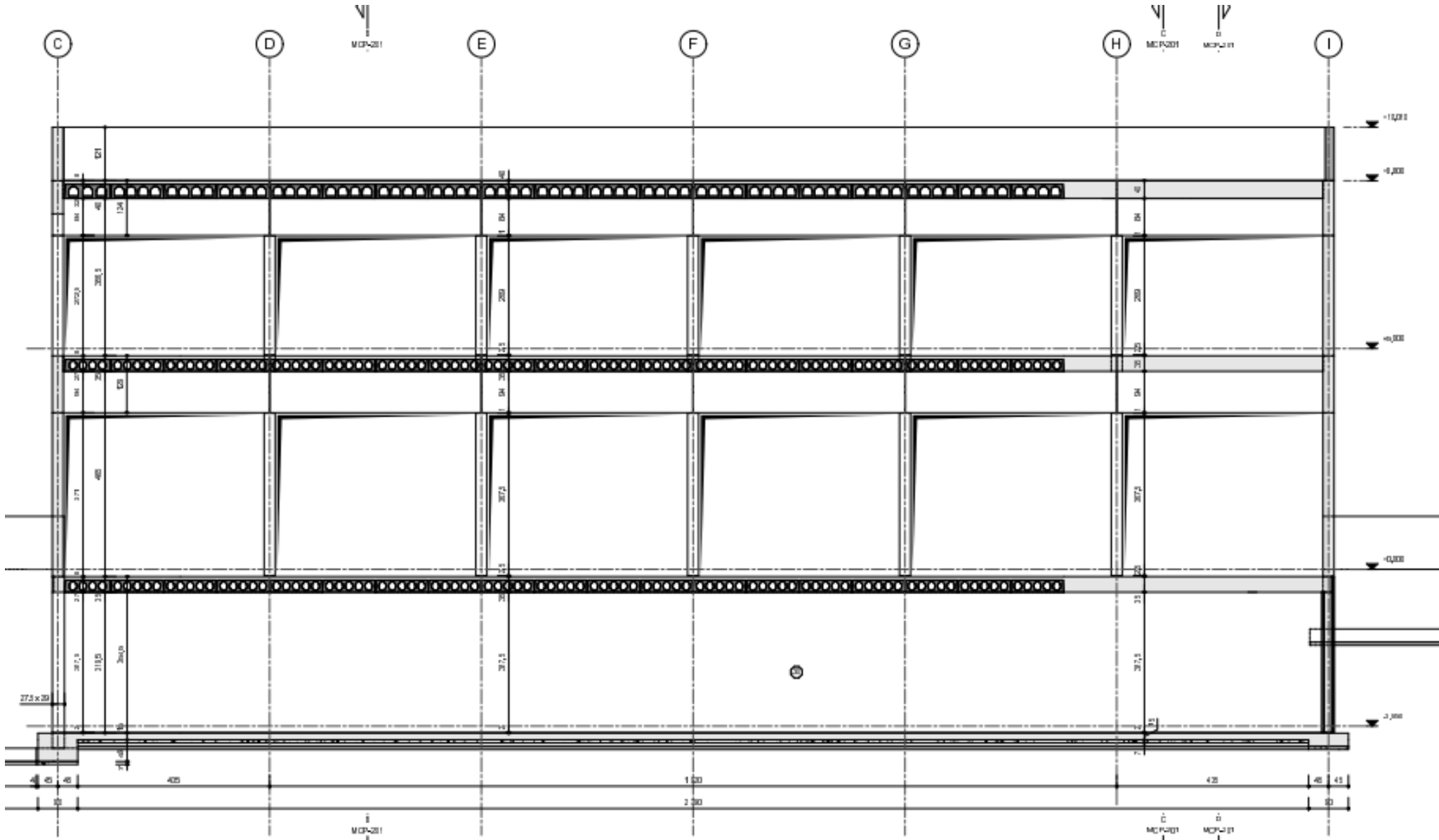
Plane view – level 1



Plane view – roof

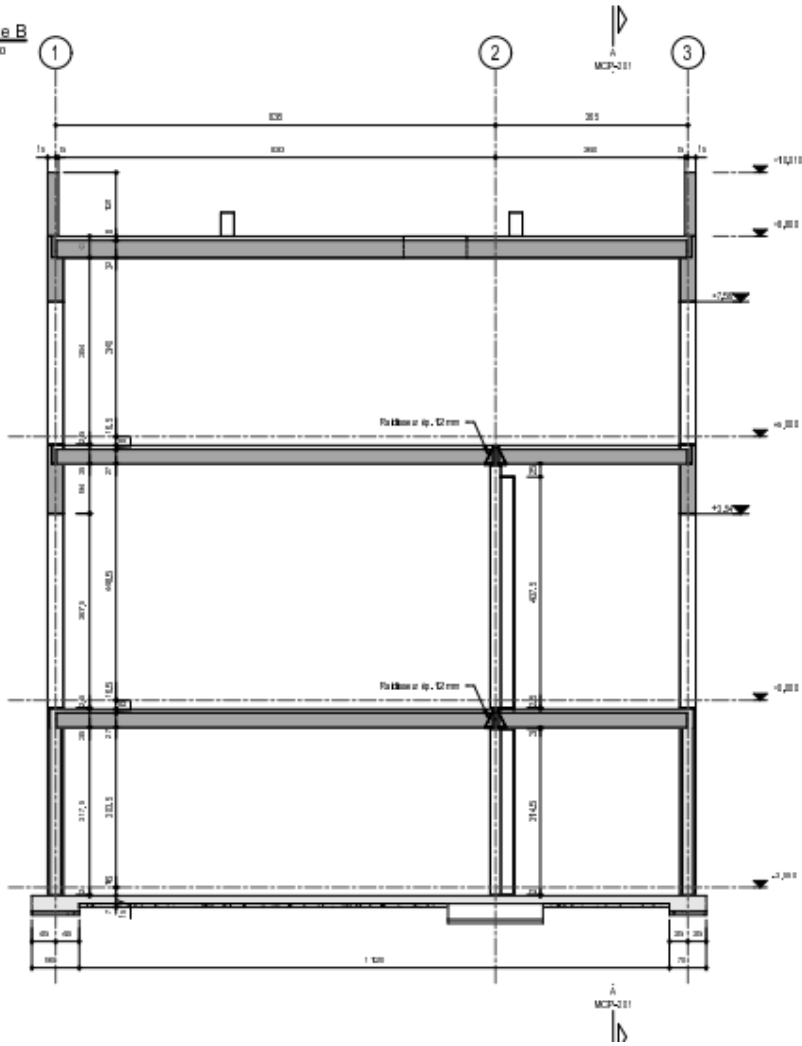


Elevation

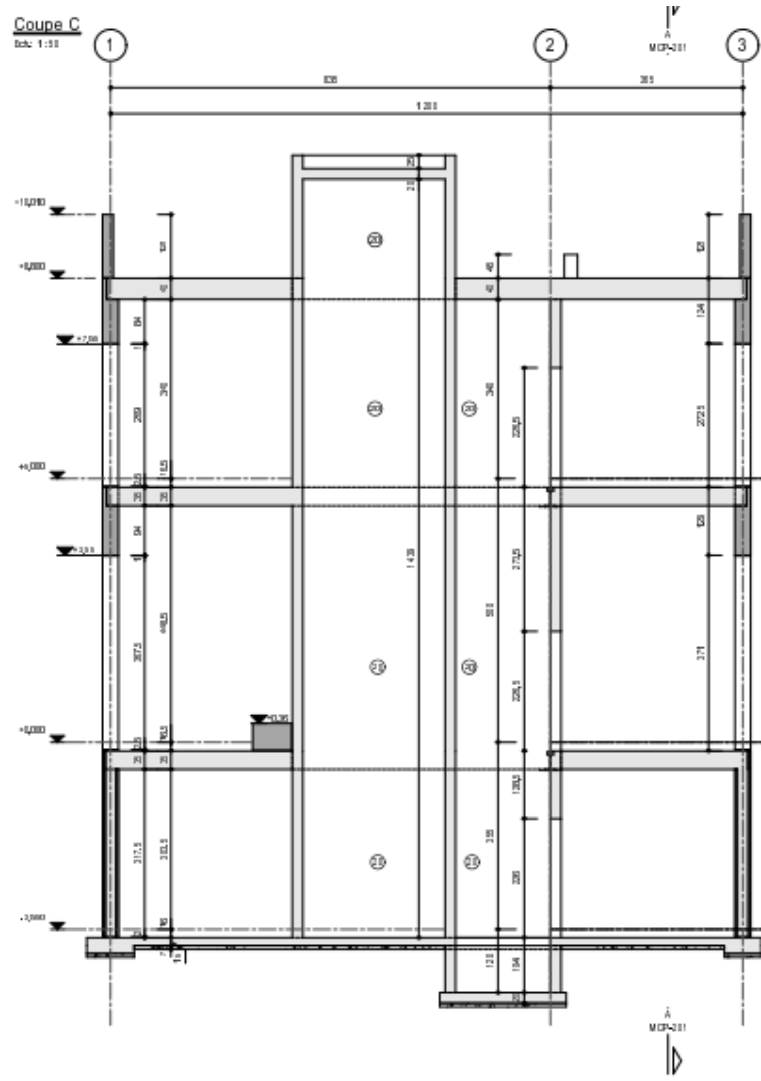


Elevation

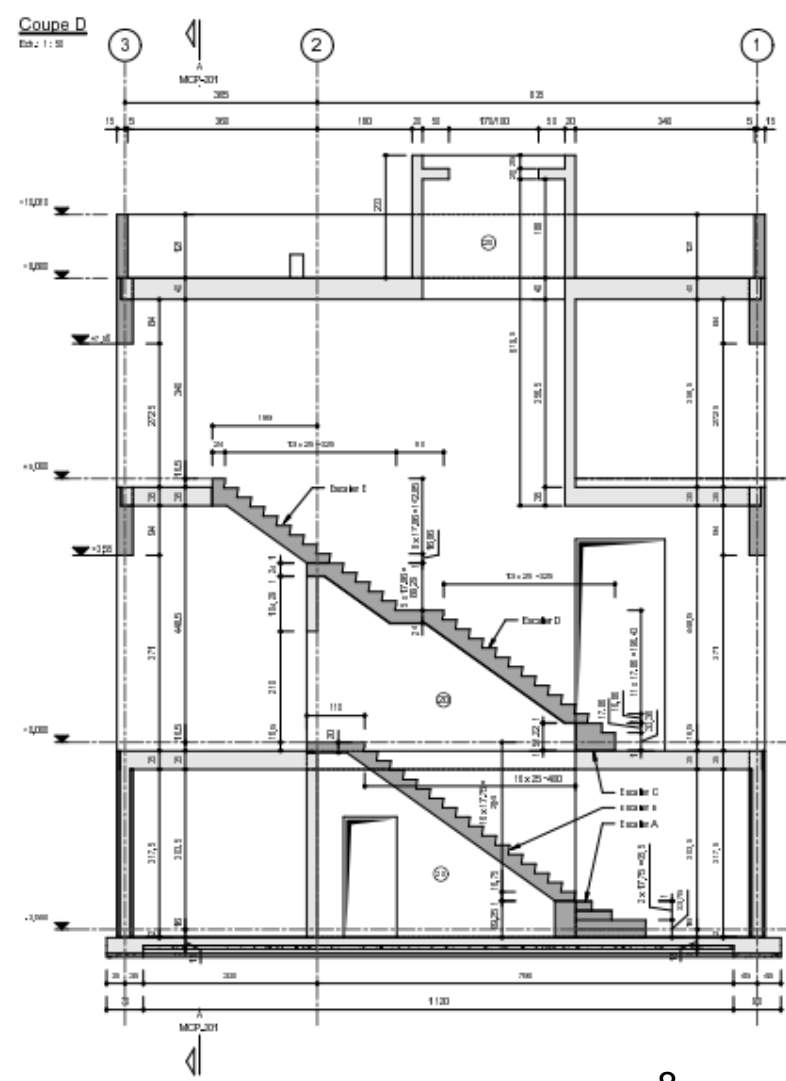
Coupe B
Ech. 1:50



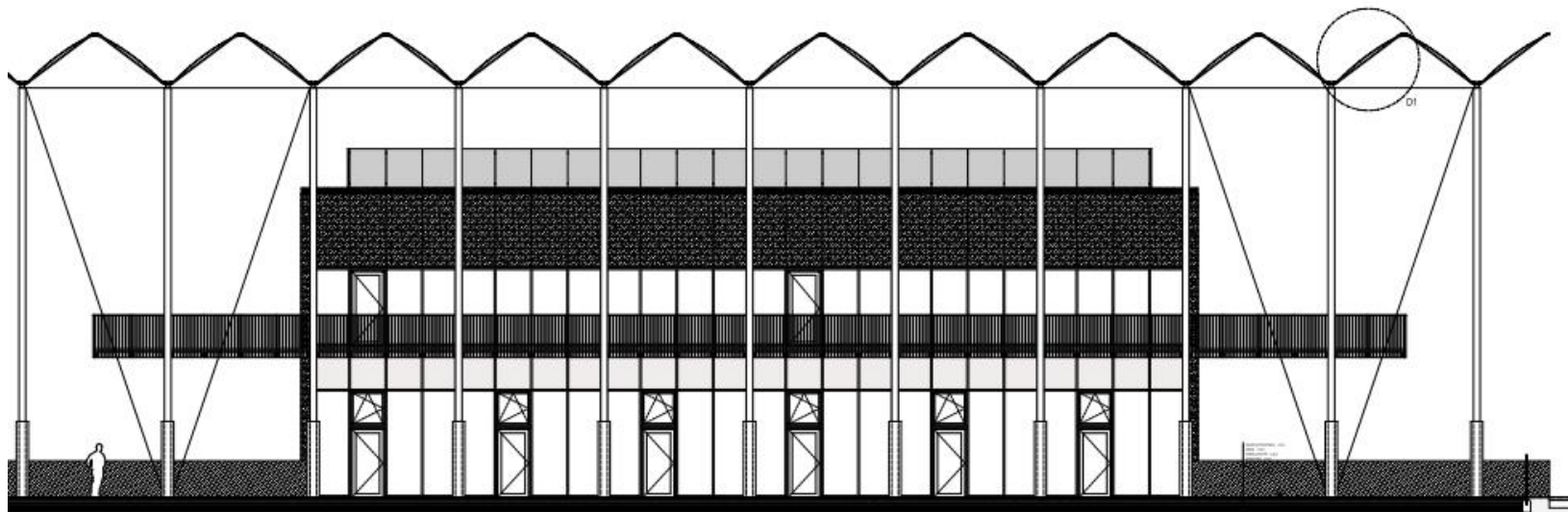
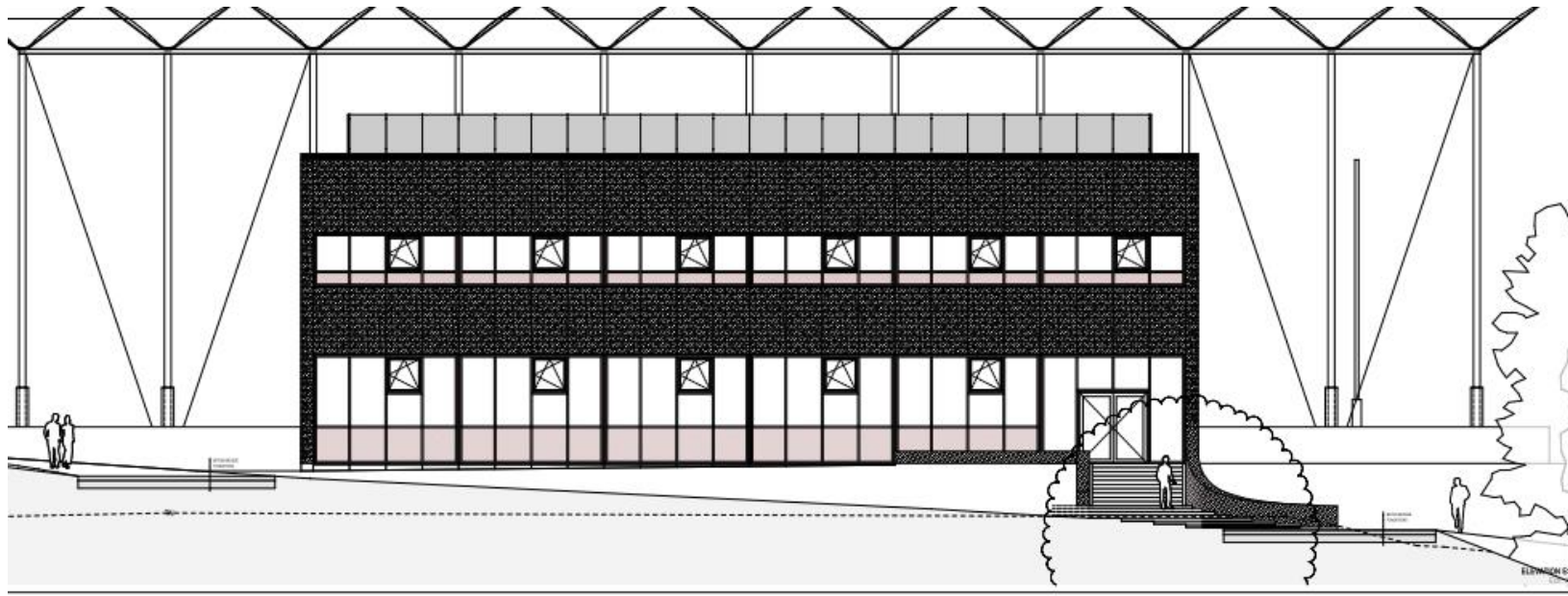
Coupe C
Ech. 1:50



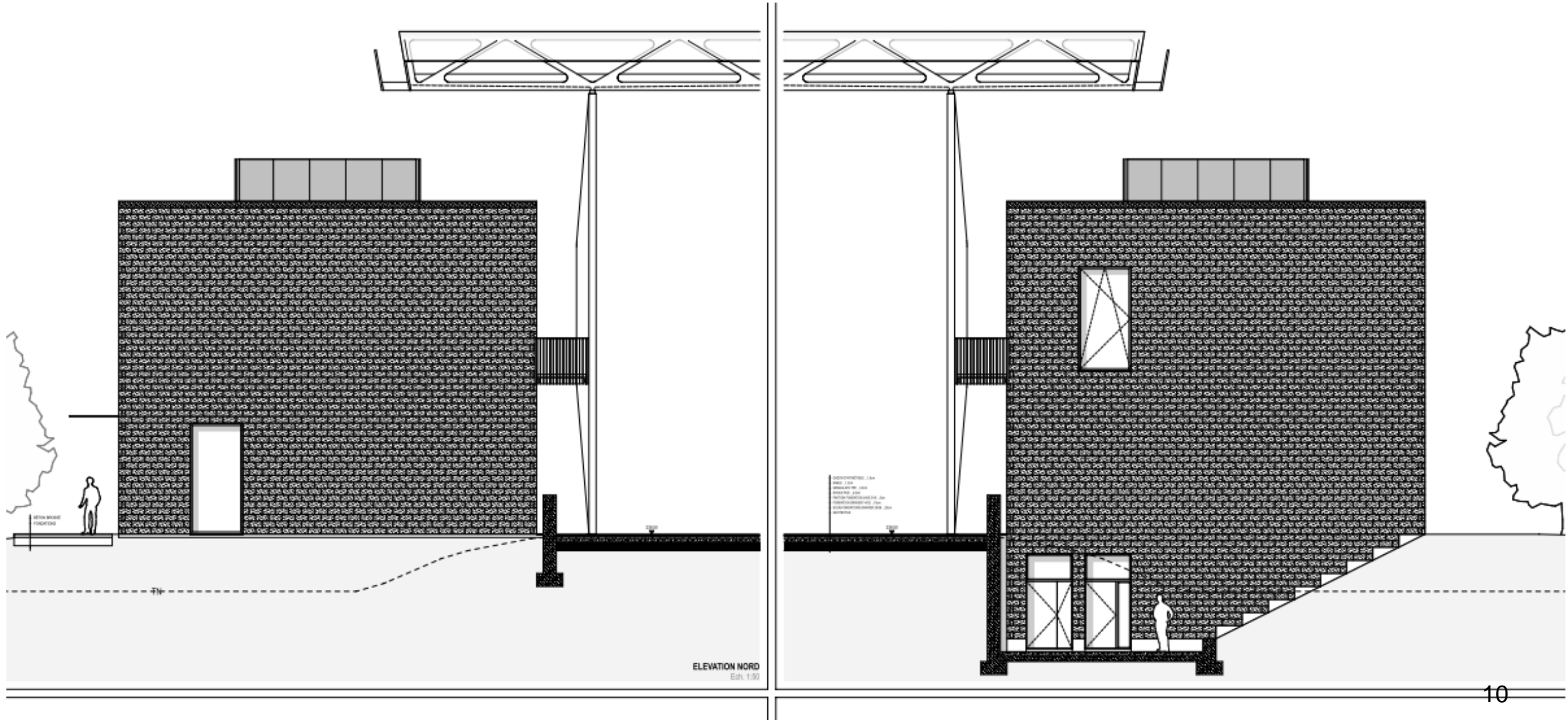
Coupe D
Ech. 1:50



Facades



Facades



1. Simplify the static scheme

Ask yourself the following questions:

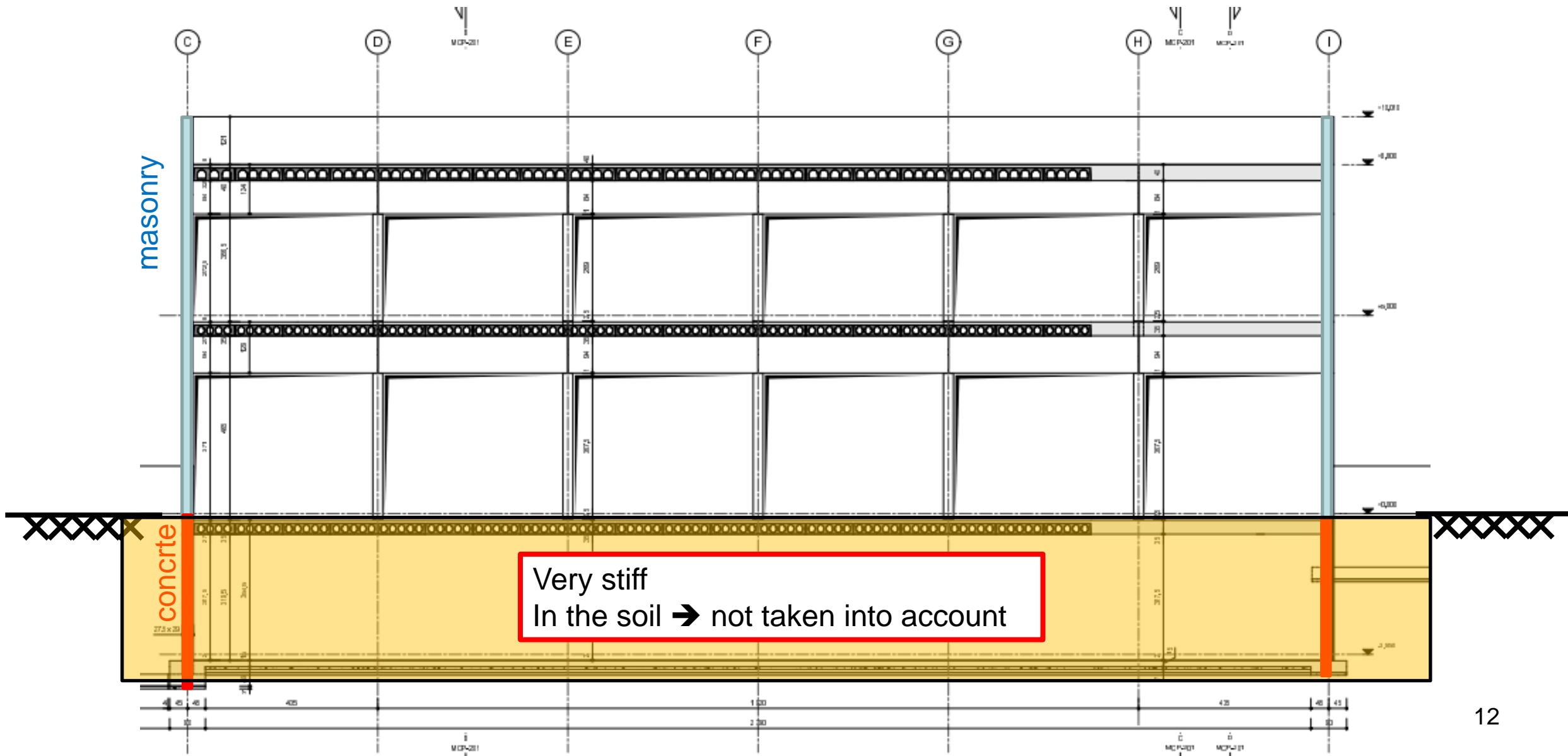
- In which direction do the earthquake loads act?
- What are the resisting elements under earthquake ?
- Do the columns sustain earthquakes loads ?
- What are the flexible parts of the building ?
- Which elements must be modelled ?
- The masonry has a very small resistance to horizontal loads → no resistance
- Make the simplest model to represent the structure behaviour under earthquake, minimise the dofs

Model the building with beam elements with only a few nodes.

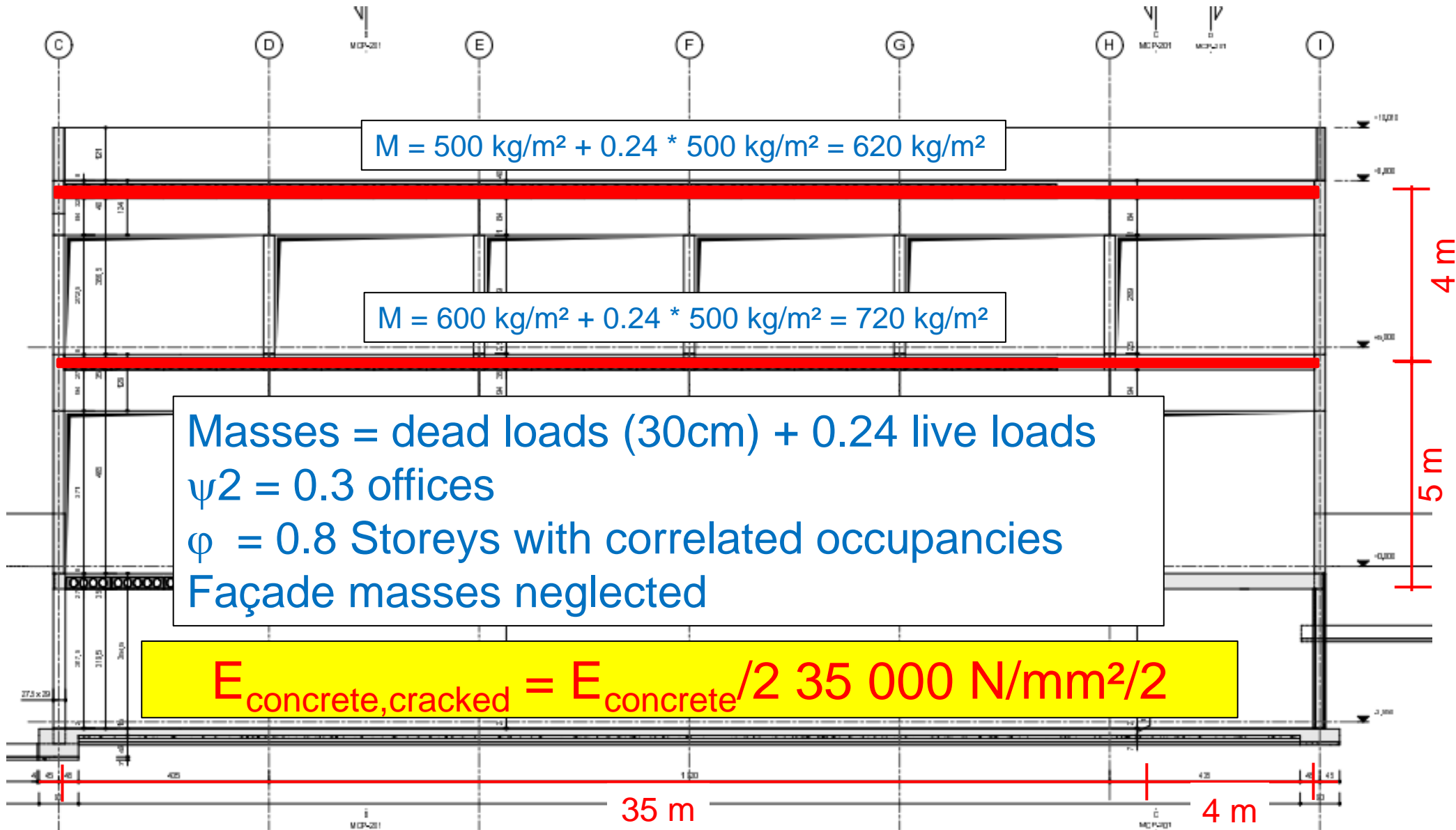
Analyse the effect of the number of nodes on the frequency, eigen modes with MyFin

For the Octave calculation, keep the more simple model

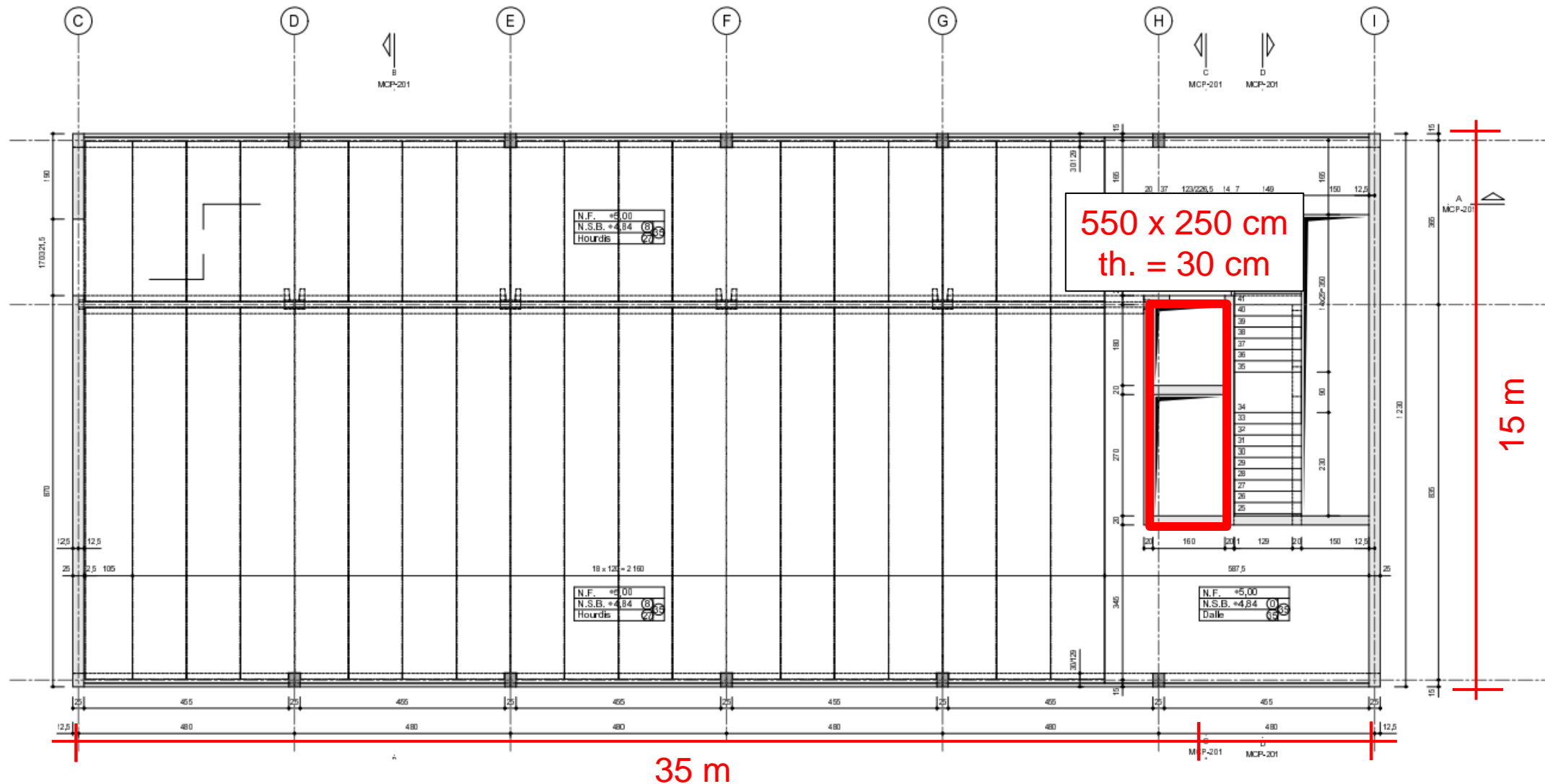
Static scheme – underground level not taken into account



Static scheme – Masses

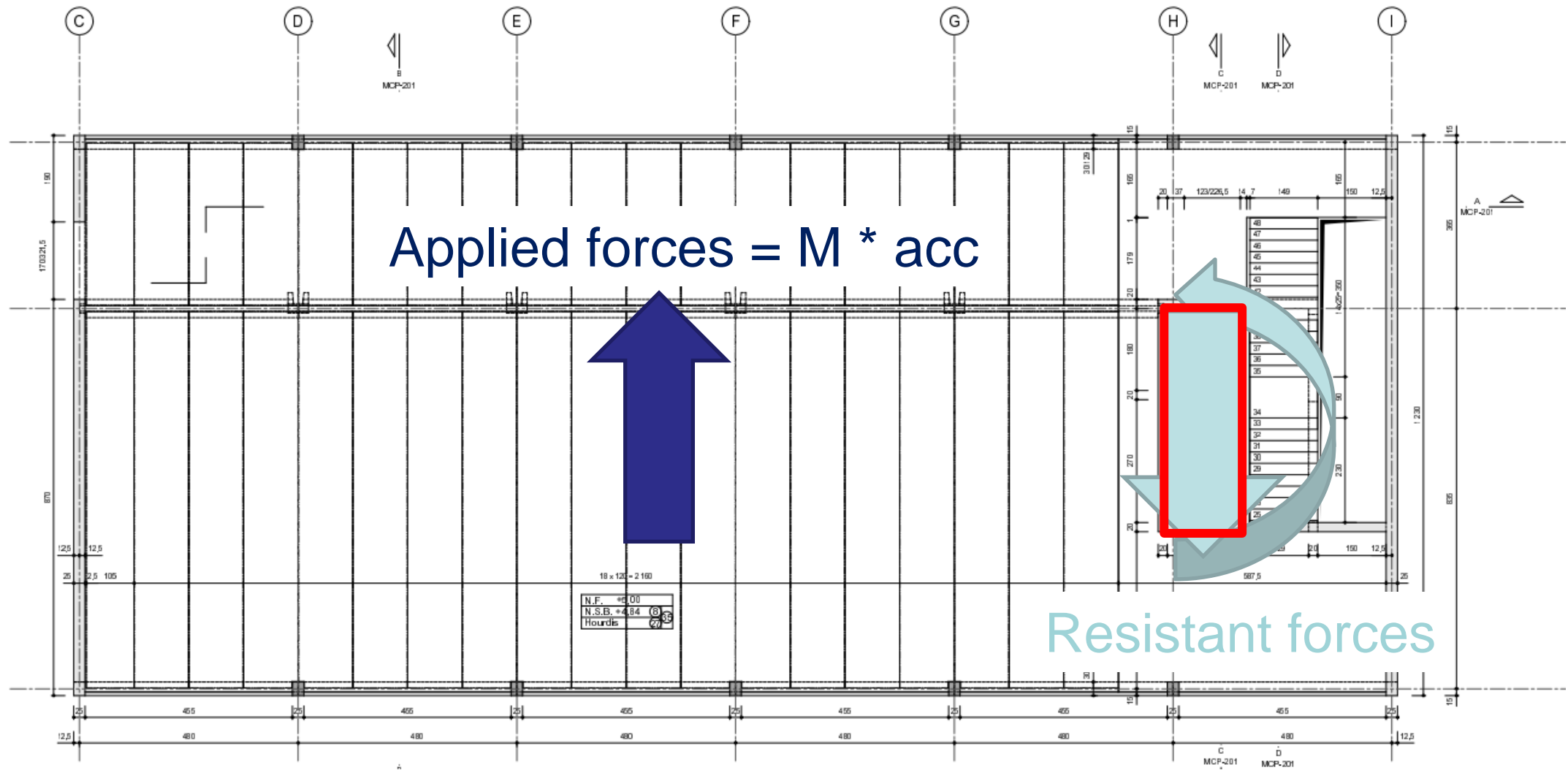


Static scheme – which element sustains the horizontal loads ?



Only the concrete central core !

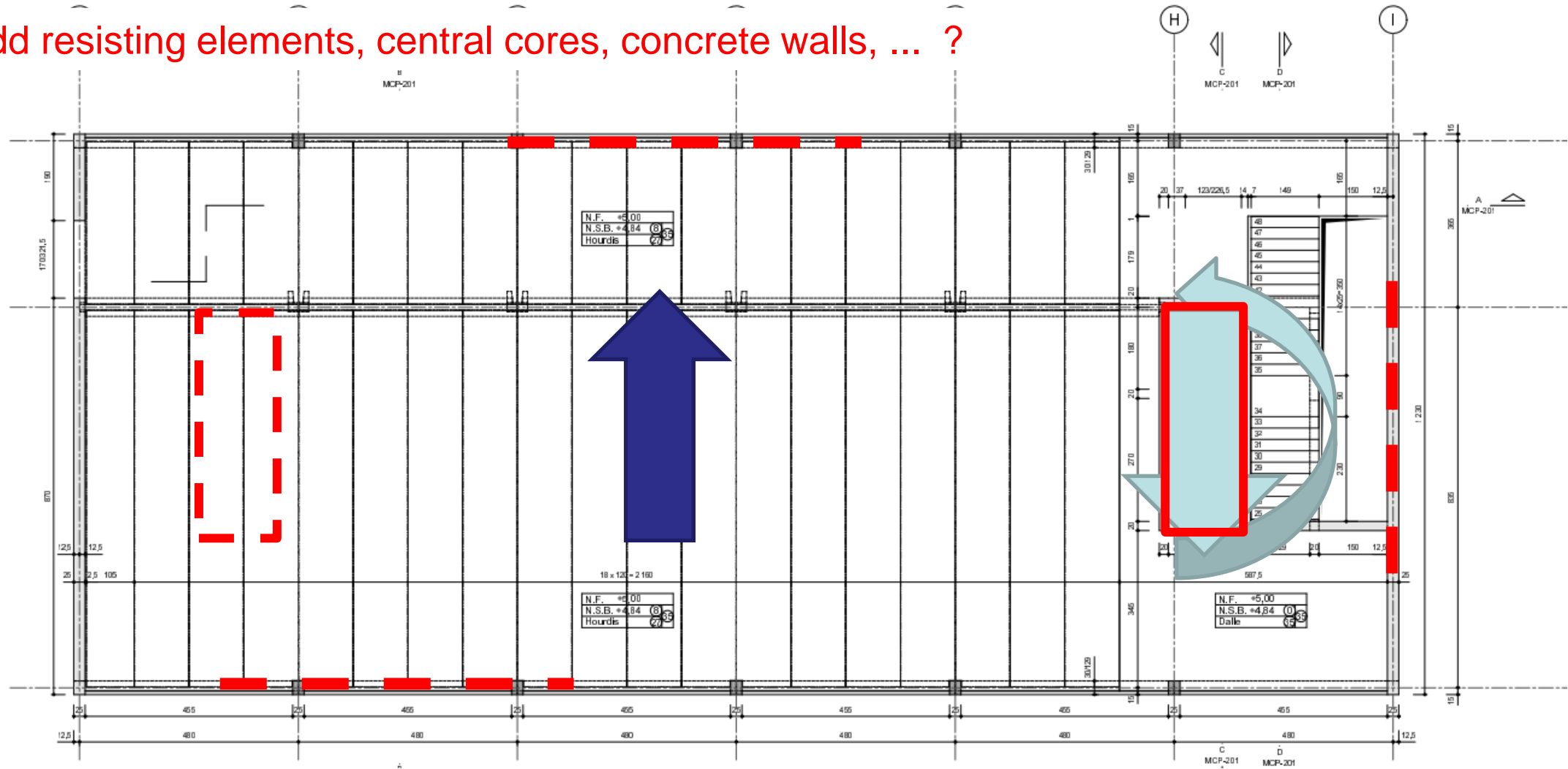
Static scheme – improve the behaviour under horizontal loads



Big torsion in the central core. What can be done to reduce the torsion ?

Static scheme – What can we do to improve the torsion

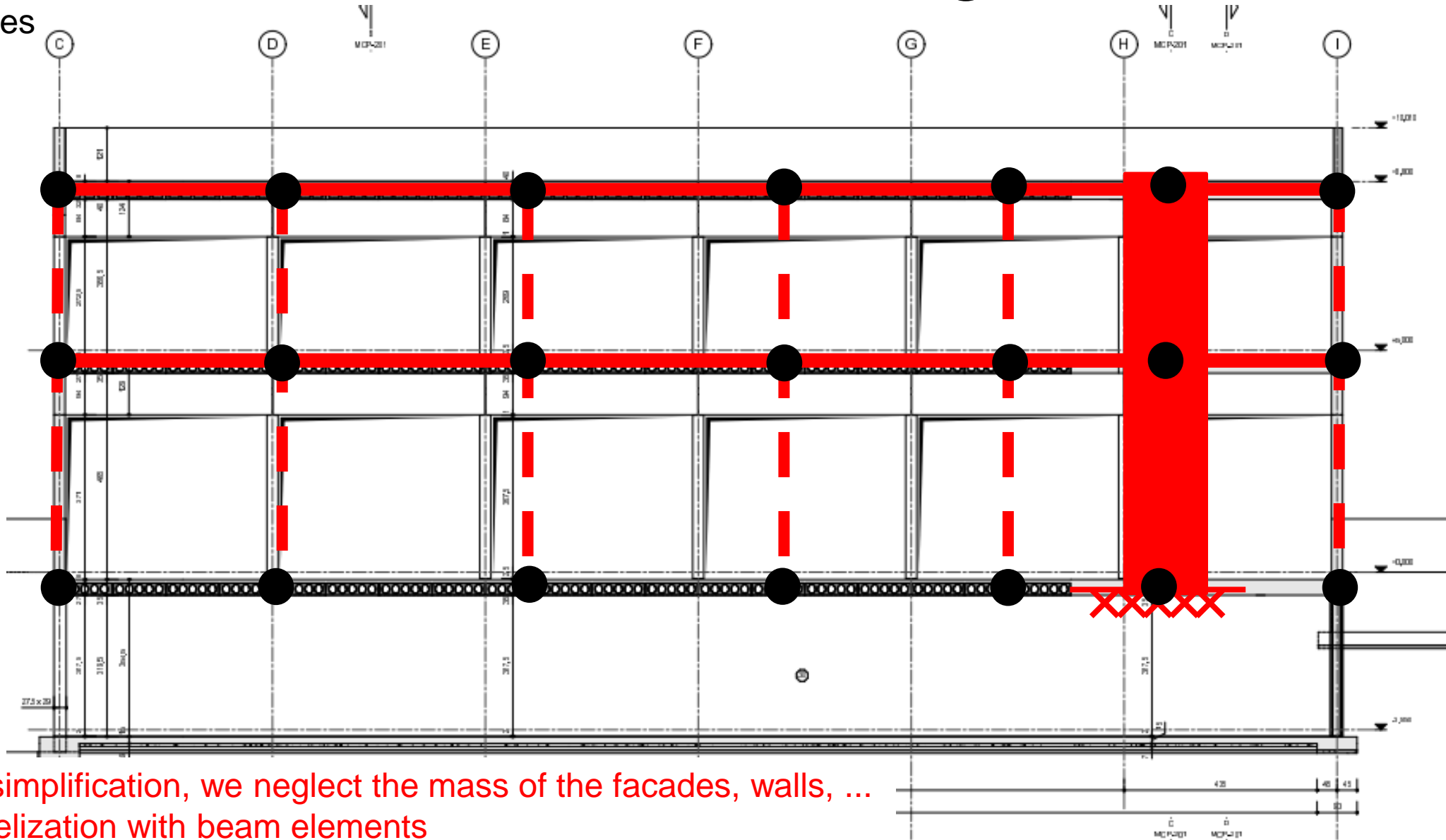
Add resisting elements, central cores, concrete walls, ... ?



Propose minimum 2 alternatives

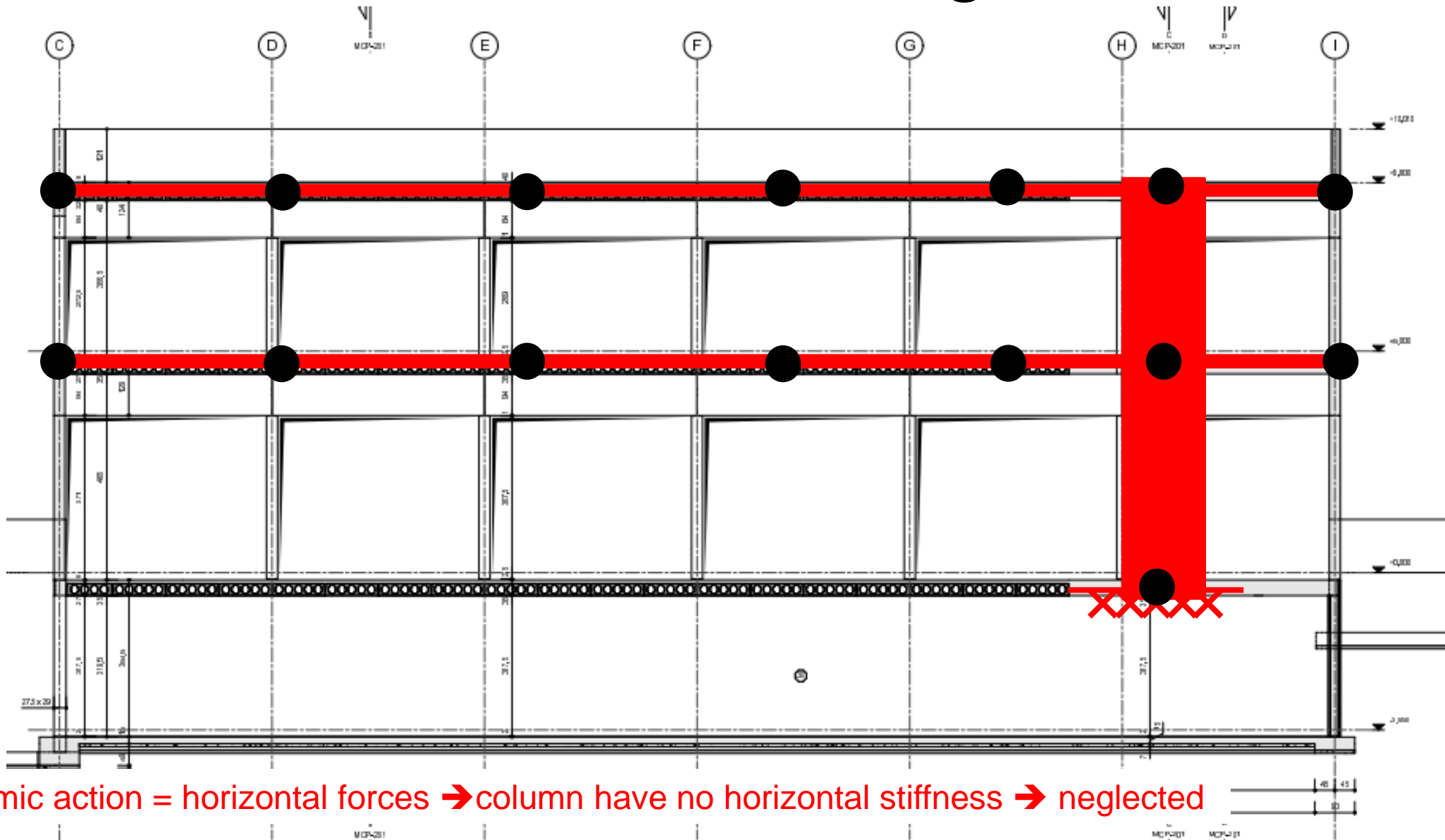
Modelization – resisting elements

● nodes



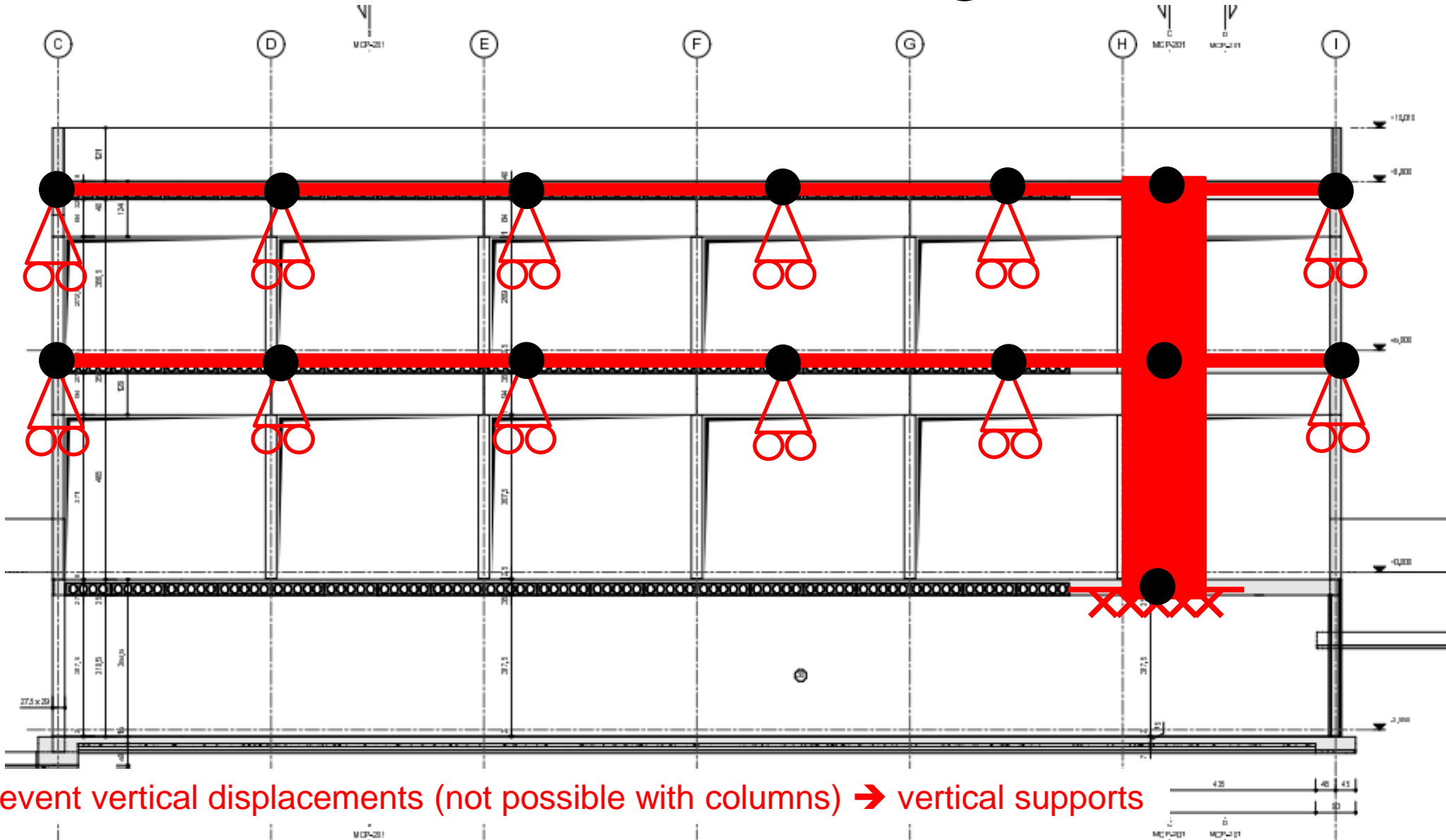
For simplification, we neglect the mass of the facades, walls, ...
Modelization with beam elements

Modelization – resisting elements

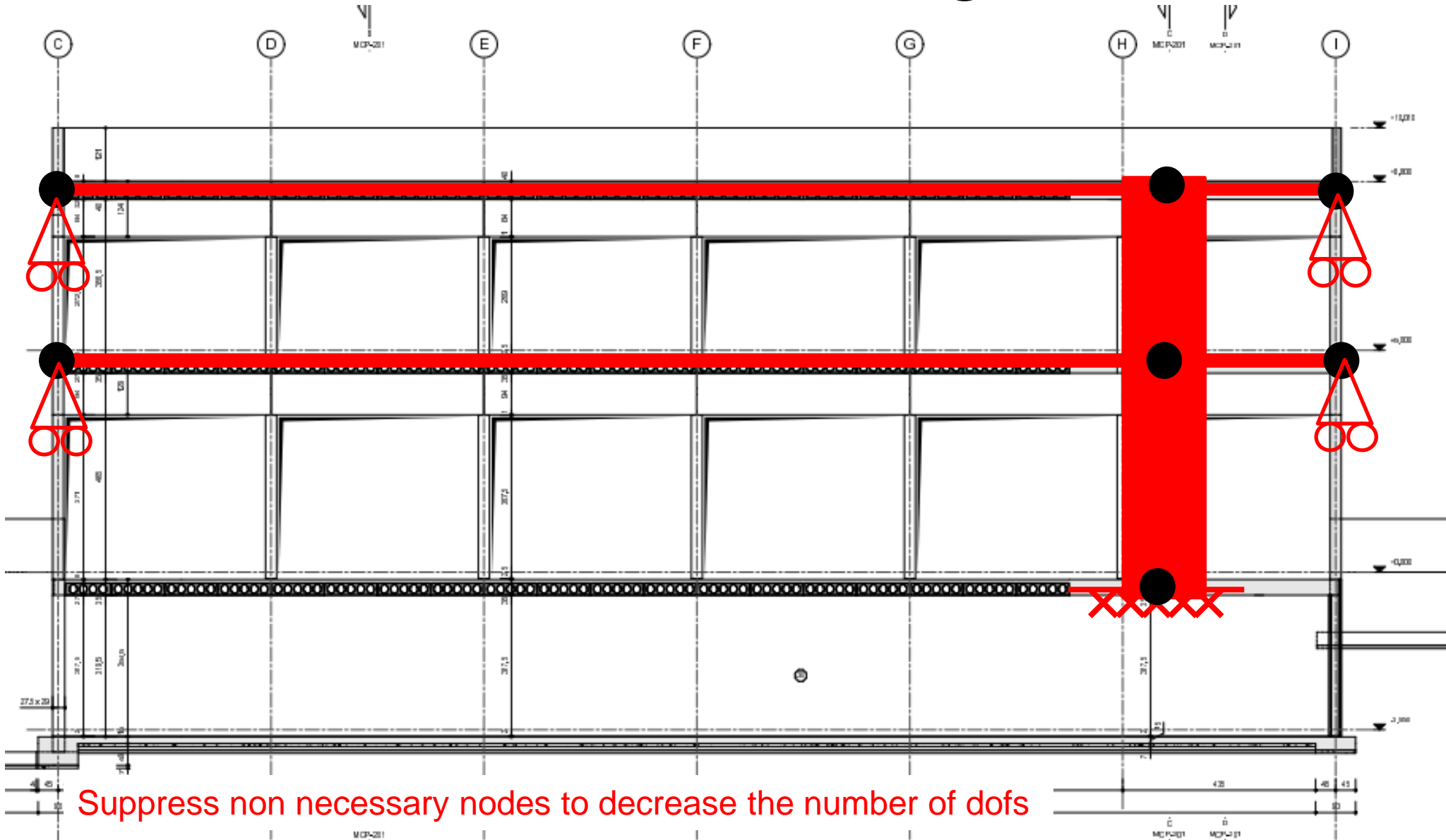


Seismic action = horizontal forces → column have no horizontal stiffness → neglected

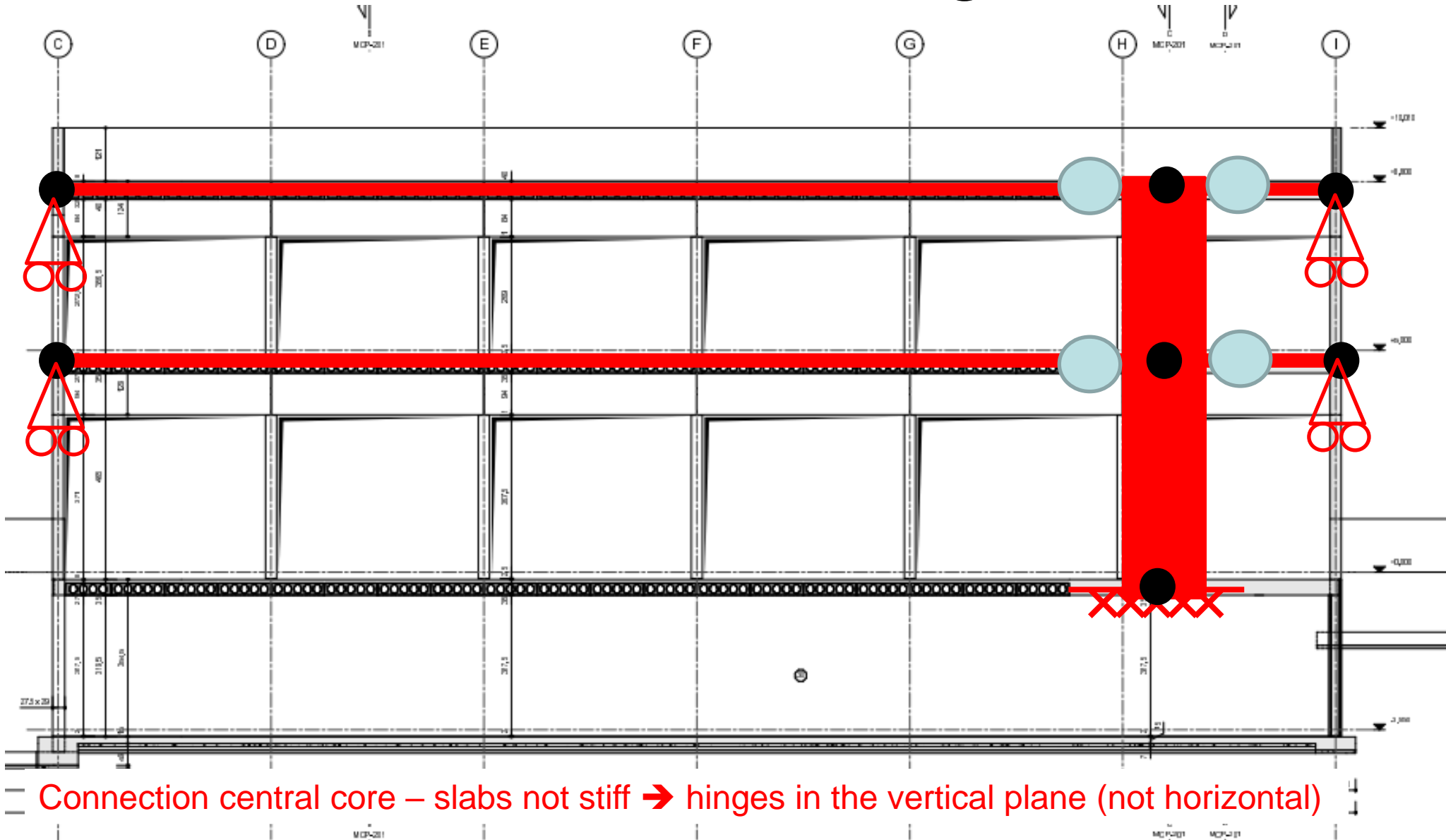
Modelization – resisting elements



Modelization – resisting elements



Modelization – resisting elements



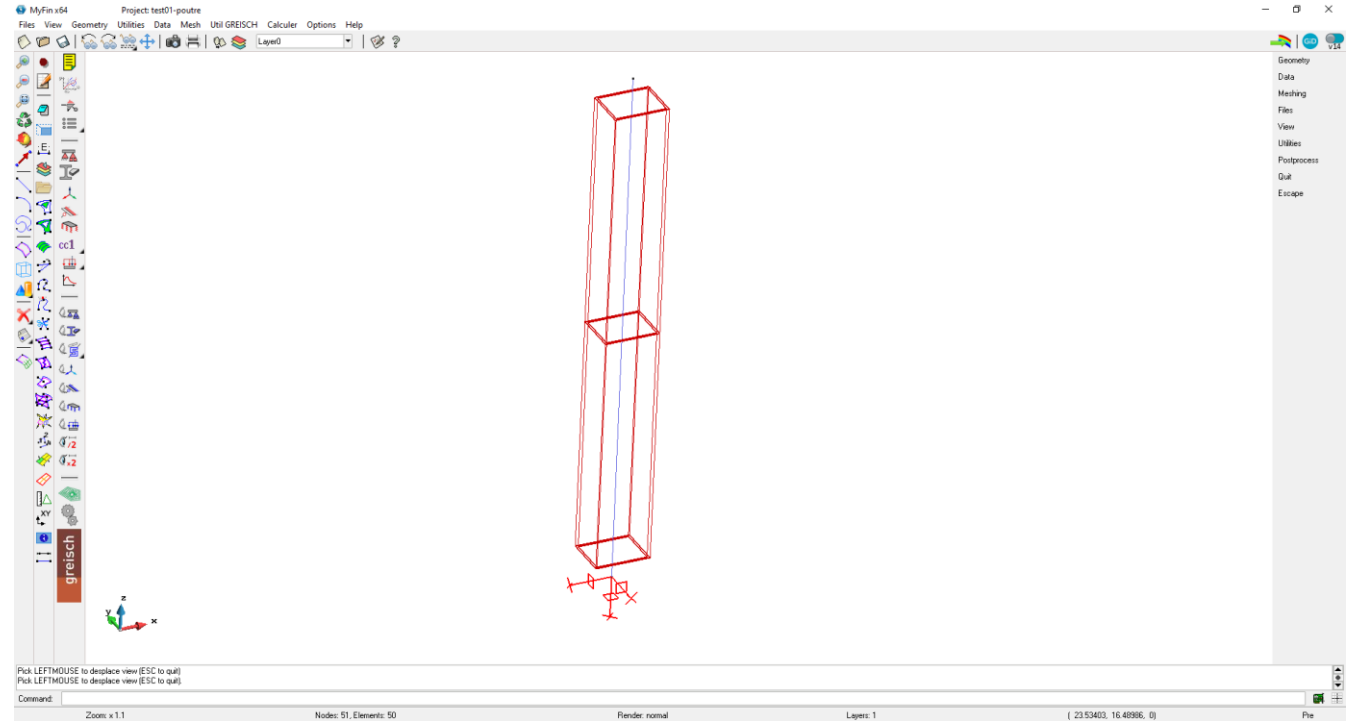
2. Frequencies and eigen modes

1. Establish the static scheme of the structure
 - Simplify the structure to focus on the horizontal behavior of the structure to represent the dynamic behavior under earthquake. Use beam elements.
 - Make some modification to improve the torsion behavior
2. Frequencies and eigen modes
 - Make the modelization of the structure with MyFin. Use beam elements
 - Compute the first eigen modes and draw the first important eigen modes
 - Analyse the effects of the number of beams for the vertical columns, the horizontal beams
 - Extract the stiffness and mass matrix of the system **for the minimum of beam elements**
 - Import the matrices in Octave (Matlab)
 - Compute the eigen modes and the frequencies
 - Eigen mode normalized with maximal displacement = 1.00
 - Compare with the MyFin solution

2. Frequencies and eigen modes

Use MyFin – Finelg software

- Compute first eigen modes
- Draw the eigen shape



- Extract the stiffness and mass matrices
 - Stiffness : *filename_MATK.txt*
 - Mass : *filename_MATM.txt*
- Import the matrices in Matlab and compute the eigen modes
 - `K = readmatrix('filename_MATK.TXT')`
 - `M = readmatrix('filename_MATM.TXT')`
 - **Warning: K and M are the full matrices with the supported nodes**

Take supports into account (example)

*Attention: Matrices from MyFin include all the nodes
Suppress the node related to the support*



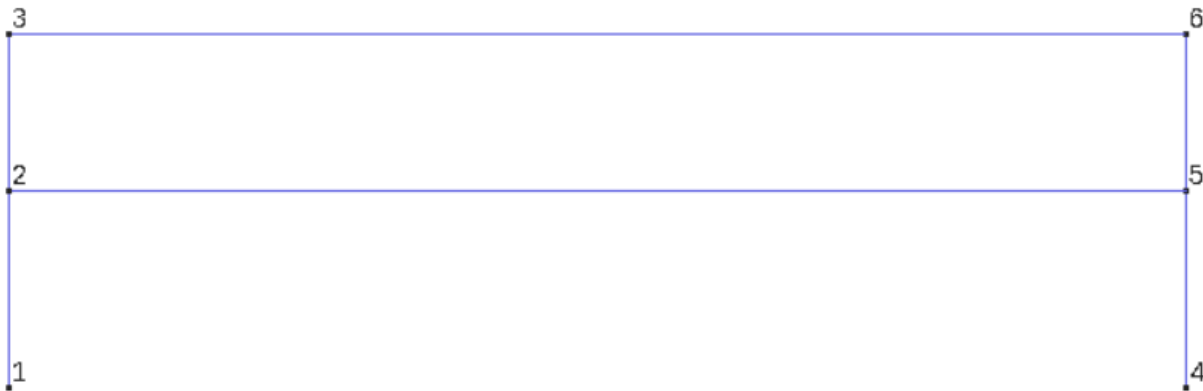
		NODES			
		1	2	3	4
NODES	1	6x6	6x6	0	0
	2	6x6	6x6	0	6x6
	3	0	0	6x6	6x6
	4	0	6x6	6x6	6x6

Suppress the dofs related to supported nodes
Pay attention to the node numbers

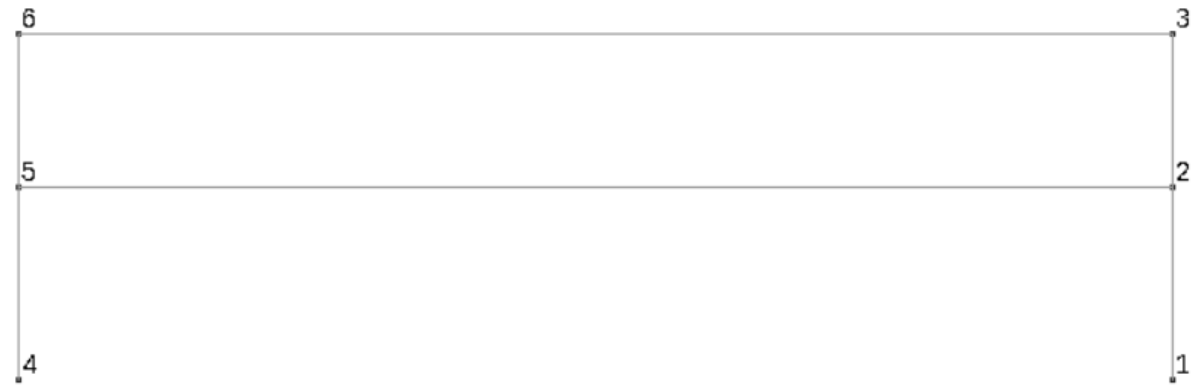
Take supports into account (example)

Attention: be careful with the nodes number

Geometry mode



Mesh mode



3. Modal properties

- Compute the modal stiffness and mass of each mode

The generalised mass, M_i , for each eigenmode i :

$$M_i = \{u_d\}_i \cdot \underline{M} \cdot \{u_d\}_i$$

Depends on the mode

- Compute the effective modal mass in both horizontal directions

The effective modal mass, PM_{ik} , for each spatial direction k et each eigen mode i :

$$PM_{ik} = \frac{(\{u_d\}_i \cdot \underline{M} \cdot \{e\}_k)^2 \cdot 100}{(\{u_d\}_i \cdot \underline{M} \cdot \{u_d\}_i) \cdot (\{e\}_k \cdot \underline{M} \cdot \{e\}_k)}$$

with the property that

$$\sum_{i=1}^{NTLIB} PM_{ik} = 100 \%$$

Depends on the mode and the seism direction

- Compute the modal share ratio for both horizontal directions

The modal share ratio , RM_{ik} , for each spatial direction k et each mode i :

$$RM_{ik} = \frac{\{u_d\}_i \cdot \underline{M} \cdot \{e\}_k}{\{u_d\}_i \cdot \underline{M} \cdot \{u_d\}_i}$$

Depends on the mode and the seism direction

Where:

- M is the mass matrix
- $\{u_d\}_i$ is the i^{th} eigen mode
- $\{e\}_k$ is a vector with 1 for each dof in the considered direction and 0 for the others

Definition of the e_x , e_y , e_z vector

$\{e\}_k$ is a vector with 1 for each dof in the considered seism direction and 0 for the others

By node: 6 degrees of freedom (dofs) : $x, y, z, \theta_x, \theta_y, \theta_z$

A total of 4 nodes \rightarrow vector 1×24

	x	y	z	θ_x	θ_y	θ_z	x	y	z	θ_x	θ_y	θ_z	x	y	z	θ_x	θ_y	θ_z	x	y	z	θ_x	θ_y	θ_z	
ex:	1	0	0	0	0	0	1	0	0	0	0	0	1	0	0	0	0	0	1	0	0	0	0	0	<i>Seism in x direction</i>
ey:	0	1	0	0	0	0	0	1	0	0	0	0	0	1	0	0	0	0	0	1	0	0	0	0	<i>Seism in y direction</i>
ez:	0	0	1	0	0	0	0	0	1	0	0	0	0	0	1	0	0	0	0	0	1	0	0	0	<i>Seism in z direction</i>

4. Parasismic calculation

- Establish the design acceleration spectrum according to EN 1998-1

The building is located in Liege with a soil class C according EN 1998-1

The building is an office building with meeting rooms

The q factor is taken equal to 1.5

- Compute the response (displacements) of each mode in each direction
- Compute the maximum response in each direction (SSRS and CQC) of the building top
 - Which modes govern the total seismic response for each direction ?
- Compute the support forces
- Combine the support forces for both horizontal seism directions

Design Spectrum definition

According to EN 1998-1: chapter 3.2.2.5

(4)P For the horizontal components of the seismic action the design spectrum, $S_d(T)$, shall be defined by the following expressions:

$$0 \leq T \leq T_B : S_d(T) = a_g \cdot S \cdot \left[\frac{2}{3} + \frac{T}{T_B} \cdot \left(\frac{2,5}{q} - \frac{2}{3} \right) \right] \quad (3.13)$$

$$T_B \leq T \leq T_C : S_d(T) = a_g \cdot S \cdot \frac{2,5}{q} \quad (3.14)$$

$$T_C \leq T \leq T_D : S_d(T) \begin{cases} = a_g \cdot S \cdot \frac{2,5}{q} \cdot \left[\frac{T_C}{T} \right] \\ \geq \beta \cdot a_g \end{cases} \quad (3.15)$$

$$T_D \leq T : S_d(T) \begin{cases} = a_g \cdot S \cdot \frac{2,5}{q} \cdot \left[\frac{T_C T_D}{T^2} \right] \\ \geq \beta \cdot a_g \end{cases} \quad (3.16)$$

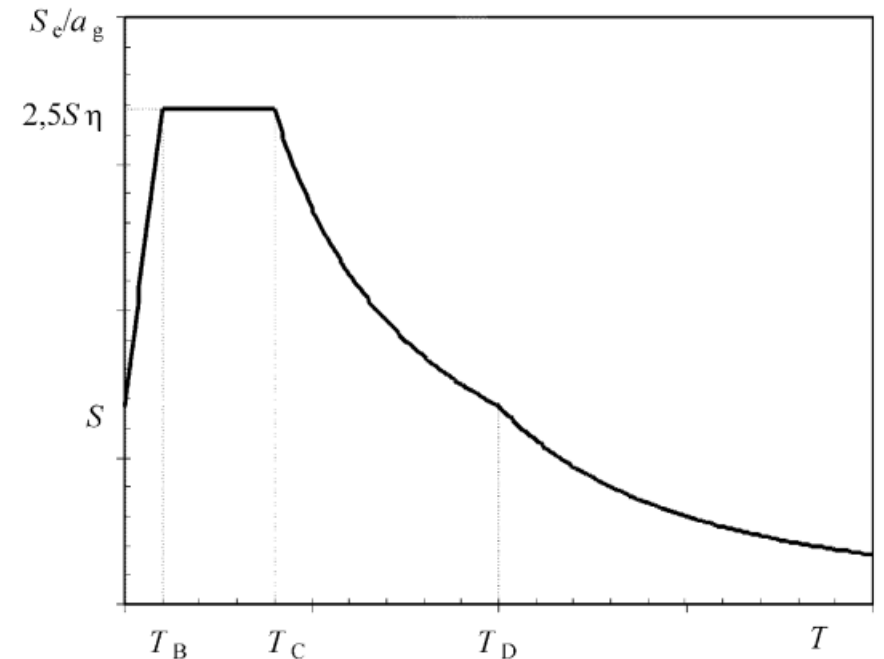
where

a_g , S , T_C and T_D are as defined in 3.2.2.2;

$S_d(T)$ is the design spectrum;

q is the behaviour factor;

β is the lower bound factor for the horizontal design spectrum.



NOTE The value to be ascribed to β for use in a country can be found in its National Annex. The recommended value for β is 0,2.

Design Spectrum definition

Table 3.3: Values of the parameters describing the recommended Type 2 elastic response spectra

Ground type	S	T_B (s)	T_C (s)	T_D (s)
A	1,0	0,05	0,25	1,2
B	1,35	0,05	0,25	1,2
C	1,5	0,10	0,25	1,2
D	1,8	0,10	0,30	1,2
E	1,6	0,05	0,25	1,2

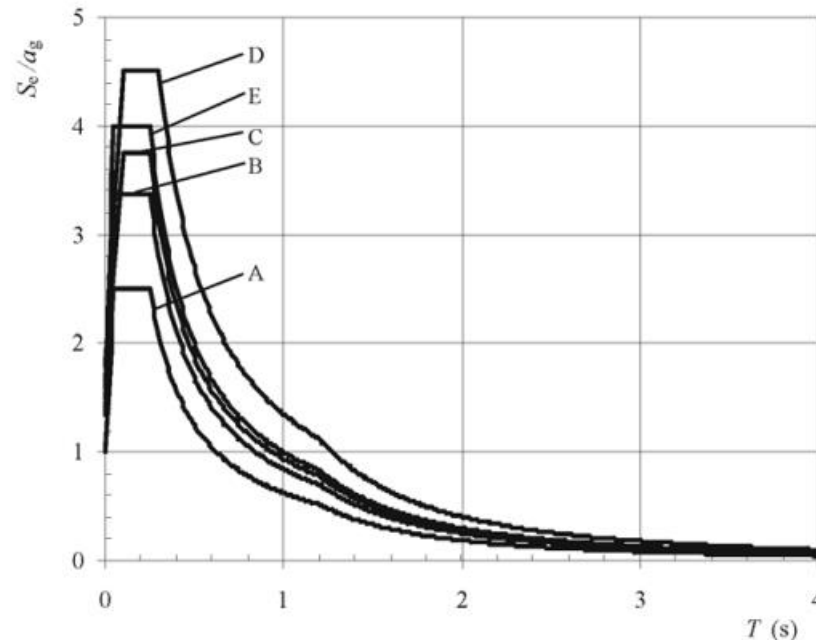


Figure 3.3: Recommended Type 2 elastic response spectra for ground types A to E (5% damping)

Design Spectrum definition

3.2 Action sismique 3.2.1 Zones sismiques

(2) La carte normative de zonage sismique de la Belgique est donnée à la Figure 1. La Belgique comporte 5 zones où l'accélération horizontale maximale de référence a_{gr} sur le rocher vaut respectivement :

- Zone sismique 0 : Pas d'accélération significative
- Zone sismique 1 : $a_{gr} = 0,39 \text{ m/s}^2$ ou $0,04 \text{ g}$
- Zone sismique 2 : $a_{gr} = 0,59 \text{ m/s}^2$ ou $0,06 \text{ g}$
- Zone sismique 3 : $a_{gr} = 0,78 \text{ m/s}^2$ ou $0,08 \text{ g}$
- Zone sismique 4 : $a_{gr} = 0,98 \text{ m/s}^2$ ou $0,10 \text{ g}$

$$a_{gr} = 0.1 * g$$

La liste des communes belges avec l'indication de la zone sismique à laquelle elles appartiennent est fournie en tableau en fin de la présente ANB.

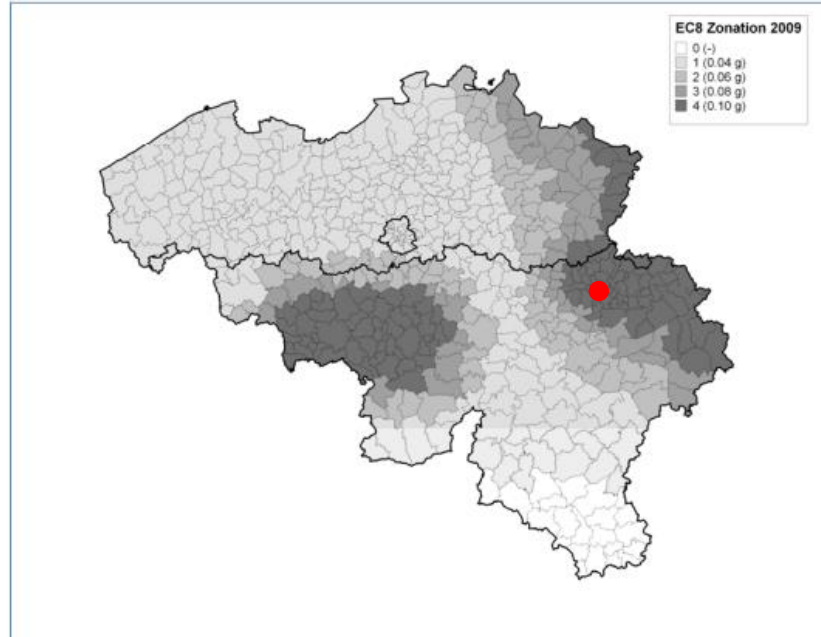


Figure 3.1-ANB : Carte de zonage sismique de la Belgique

$$a_g = \gamma_i * a_{gr}$$

4.2.5 Importance classes and importance factors

(1)P Buildings are classified in 4 importance classes, depending on the consequences of collapse for human life, on their importance for public safety and civil protection in the immediate post-earthquake period, and on the social and economic consequences of collapse.

(2)P The importance classes are characterised by different importance factors γ_i as described in 2.1(3).

(3) The importance factor $\gamma_i = 1,0$ is associated with a seismic event having the reference return period indicated in 3.2.1(3).

Table 4.3 Importance classes for buildings

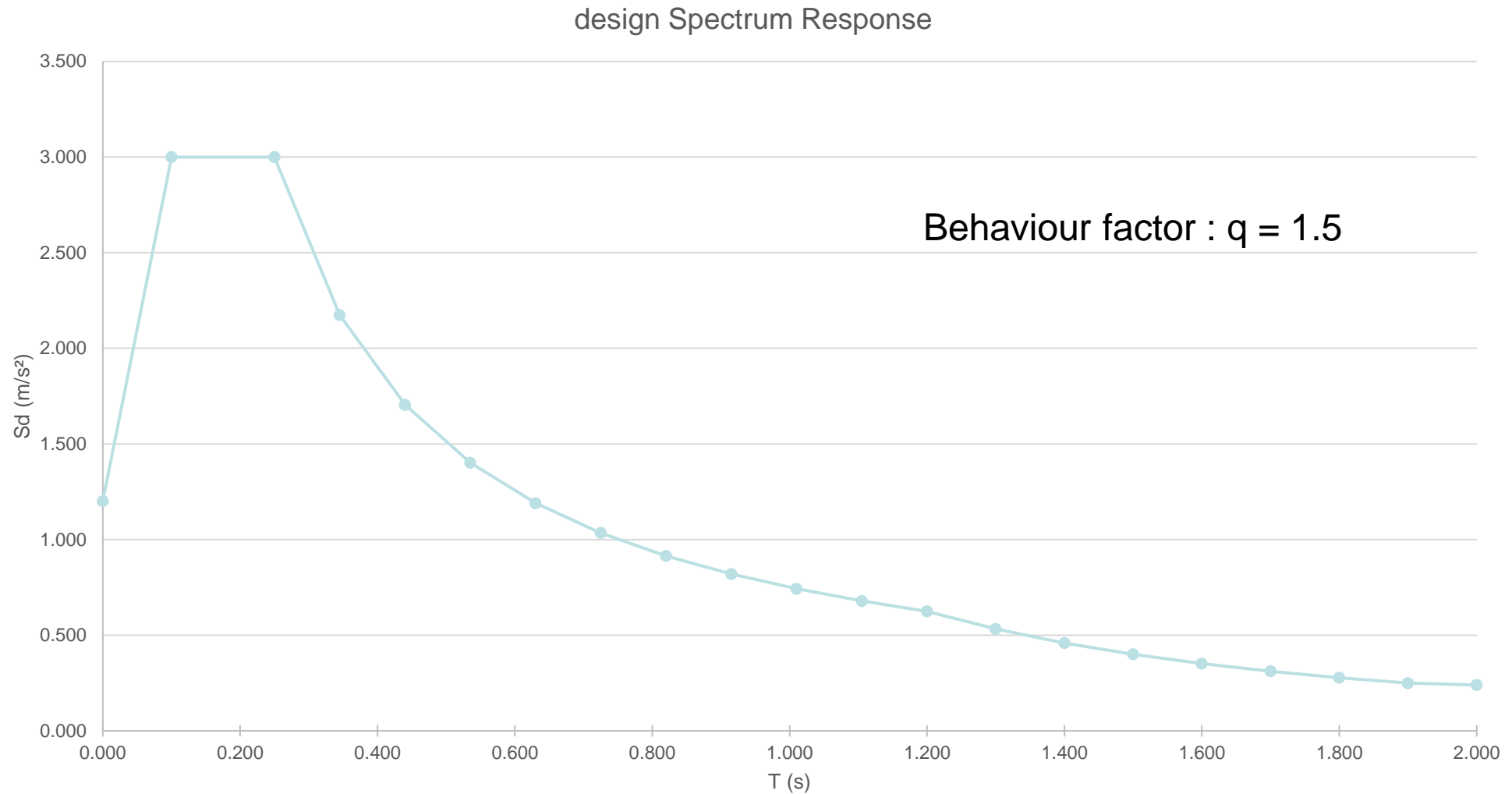
Importance class	Buildings
I	Buildings of minor importance for public safety, e.g. agricultural buildings, etc.
II	Ordinary buildings, not belonging in the other categories.
III	Buildings whose seismic resistance is of importance in view of the consequences associated with a collapse, e.g. schools, assembly halls, cultural institutions etc.
IV	Buildings whose integrity during earthquakes is of vital importance for civil protection, e.g. hospitals, fire stations, power plants, etc.

NOTE Importance classes I, II and III or IV correspond roughly to consequences classes CC1, CC2 and CC3, respectively, defined in EN 1990:2002, Annex B.

(5)P The value of γ_i for importance class II shall be, by definition, equal to 1,0.

NOTE The values to be ascribed to γ_i for use in a country may be found in its National Annex. The values of γ_i may be different for the various seismic zones of the country, depending on the seismic hazard conditions and on public safety considerations (see Note to 2.1(4)). The recommended values of γ_i for importance classes I, III and IV are equal to 0,8, 1,2 and 1,4, respectively.

Design Spectrum definition



Seismic response of one mode

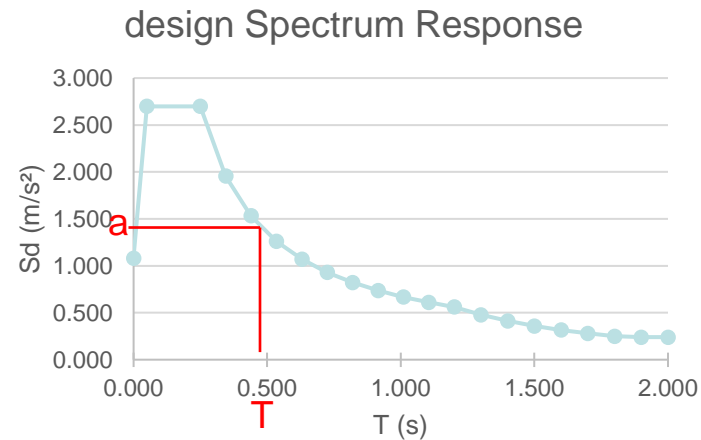
1 dof system

$$\ddot{d} + 2\xi\omega\dot{d} + \omega^2d = -\ddot{d}_g$$

n dof system
(modal base)

$$\ddot{\eta}_i + 2\xi\omega\dot{\eta}_i + \omega^2\eta_i = -RM_{ik} * \ddot{v}_g$$

Attention: modal share ratio are different for each seismic direction and modes



$$acc_{max} = Sd(\omega, \xi)$$

Generally $\xi = 5\%$

$$d_{max} = Sd(\omega, \xi) / \omega^2$$

$$\omega = 2 \cdot \pi \cdot freq = 2 \cdot \pi / T$$

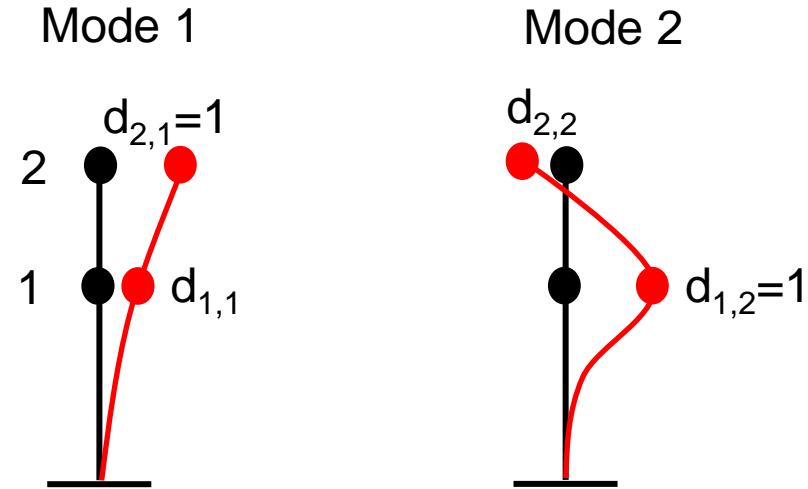
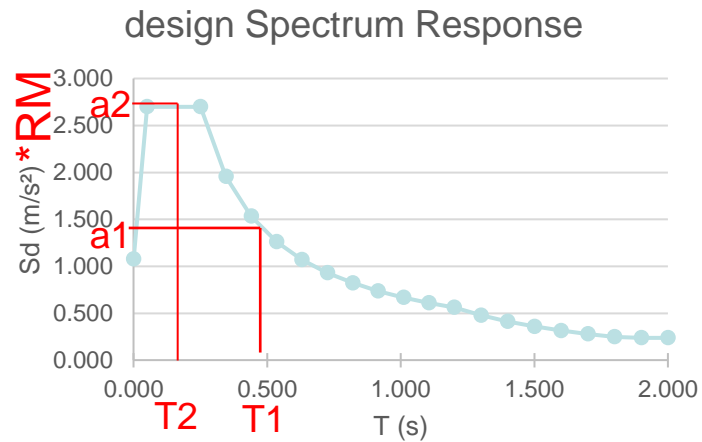
$$acc_{max,i,k} = RM_{ik} * Sd(\omega, \xi)$$

$$\eta_{max,i,k} = RM_{ik} * Sd(\omega, \xi) / \omega^2$$

Where η_i is the i^{th} eigen mode amplitude
And k the seism direction

Seismic response of all modes

For each mode i with an amplitude η_i ; the maximum displacement $d_{j,i}$ (displacement of the node (dof) j in the mode i -) is equal to: $d_{j,i} = d_{j,i} * \eta_i$, where $d_{j,i}$ is the modal displacement of mode i at node(dof) j .



Mode 1: $\omega_1 \rightarrow T_1 \rightarrow a_1 \rightarrow \eta_1 = a_1/(\omega_1)^2$

Mode 2: $\omega_2 \rightarrow T_2 \rightarrow a_2 \rightarrow \eta_2 = a_2/(\omega_2)^2$

Seismic displacements	Mode 1	Mode 2
Node 1	$\eta_1 * d_{1,1}$	$\eta_2 * d_{1,2}$
Node 2	$\eta_1 * d_{2,1}$	$\eta_2 * d_{2,2}$

Seismic response of all modes

All the modes i are not maximum at the same time

→ total displacement $\neq \sum_{i=1}^n d_{ji}$

→ total displacement = $\sqrt{\sum_{i=1}^n d_{ji}^2}$; Square Root of the Sum of the Squares = SRSS

→ Total displacement = $\sqrt{\sum_{k=1}^N \sum_{l=1}^N C_{kl} \cdot d_{ki} \cdot d_{li}}$; complete quadratic combination = CQC

$$C_{kl} = \frac{8 \xi^2 r^{1.5}}{(1+r)(1-r)^2 + 4 \xi^2 r(1+r)}$$

$$r = \frac{T_k}{T_l}$$

Where: d_{ji} = displacement j for mode i

ξ = damping ratio (default value = 0.05)

T_k, T_l = Periods of k et l .

Be careful not to add the modal amplitude but to add the nodal displacements at the same nodes

How many modes ?

Eurocode recommends that the total effective mass > 90 %

The effective modal mass, PM_{ik} , for each spatial direction k et each eigen mode i :

$$PM_{ik} = \frac{(\{u_d\}_i \cdot \underline{M} \cdot \{e\}_k)^2 \cdot 100}{(\{u_d\}_i \cdot \underline{M} \cdot \{u_d\}_i) \cdot (\{e\}_k \cdot \underline{M} \cdot \{e\}_k)}$$

with the property that

$$\sum_{i=1}^{NTLIB} PM_{ik} = 100 \%$$

With all the modes $\sum_{i=1}^{NTLib} PM_{ik} = 100 \%$

Maximum of modes = number of dofs

With n modes $\sum_{i=1}^n PM_{ik} \geq 90 \%$

Support Forces

For each mode i :

$$[K_{glo}] * \{u_d\}_i = \{F_i\} \quad \text{where } F_i = \text{nodal forces}$$

If we have a support, the nodal force F_i : support forces R_i

The maximum support force under earthquake:

$$R_{SRSS} = \sqrt{\sum_{i=1}^n R_i^2} \quad \text{or} \quad R_{CQC} = \sqrt{\sum_{k=1}^N \sum_{l=1}^N C_{kl} \cdot R_k \cdot R_l}$$

To combine, the 2 horizontal directions :

(3) As an alternative to b) and c) of (2) of this subclause, the action effects due to the combination of the horizontal components of the seismic action may be computed using both of the two following combinations:

$$\text{a) } E_{Edx} \text{ "+" } 0,30E_{Edy} \quad (4.18)$$

$$\text{b) } 0,30E_{Edx} \text{ "+" } E_{Edy} \quad (4.19)$$

where

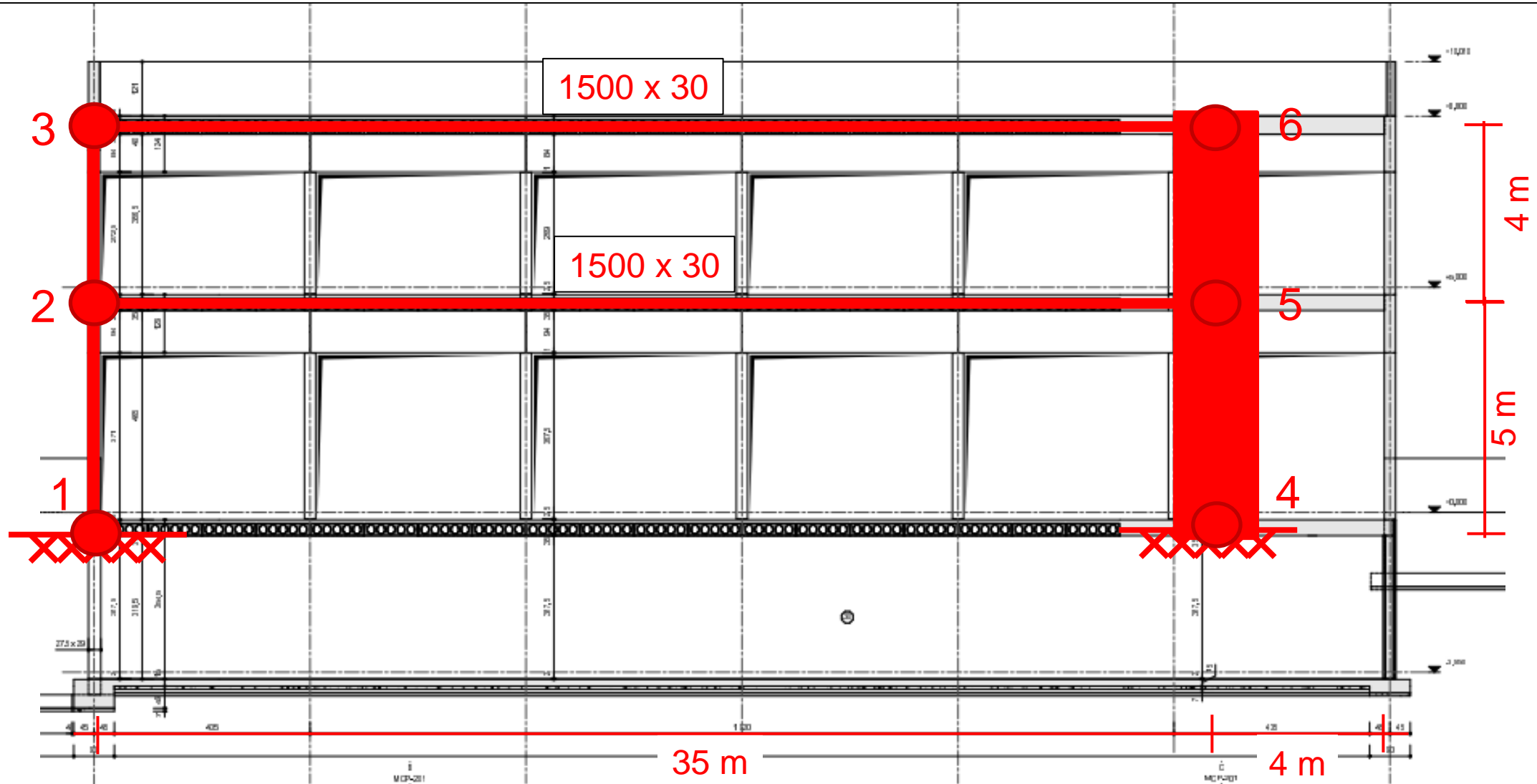
"+" implies "to be combined with";

E_{Edx} represents the action effects due to the application of the seismic action along the chosen horizontal axis x of the structure;

E_{Edy} represents the action effects due to the application of the same seismic action along the orthogonal horizontal axis y of the structure.

Stiffness Matrix (36x36)

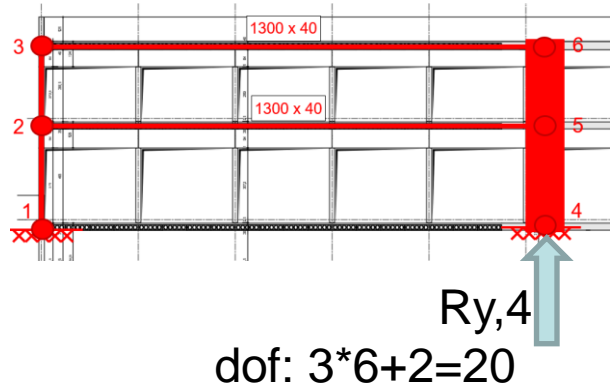
Nodes number



Support reaction

$\phi_{i,j}$ = Eigenmode i (36x1)

η_i = amplitude under seism of mode i

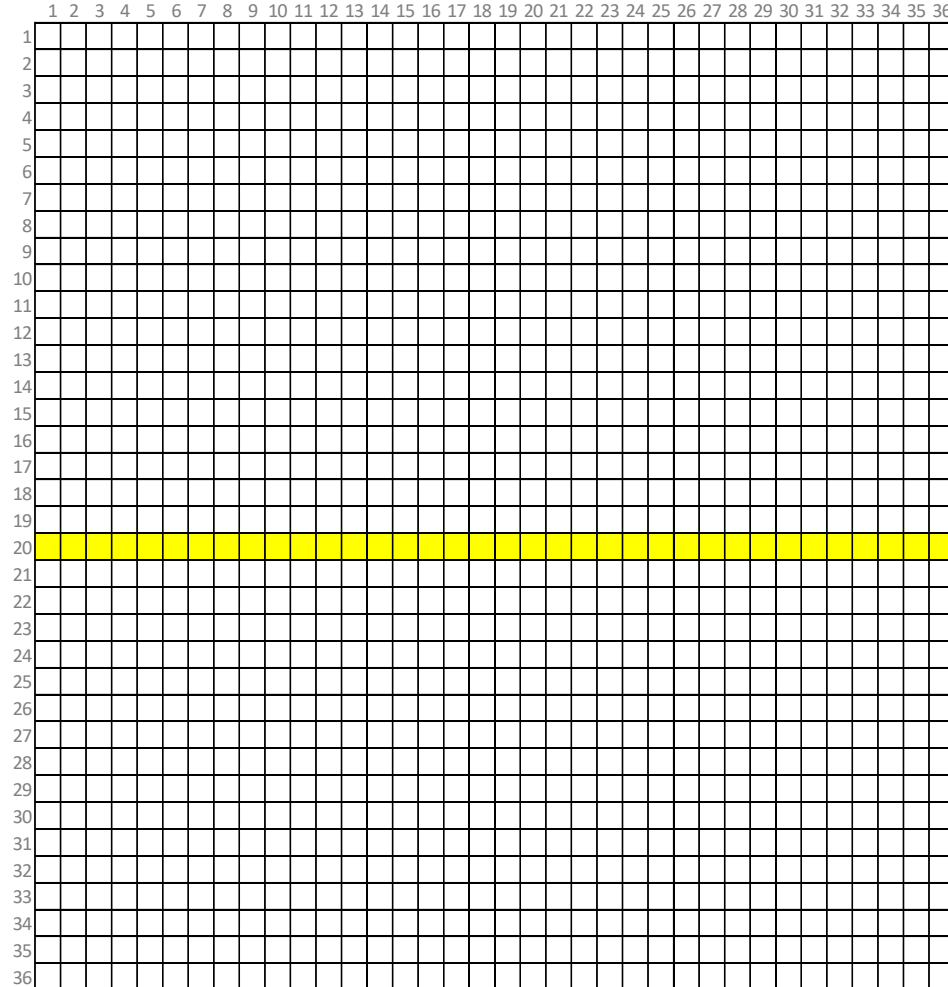


$$R_{y,4,i} \text{ (mode } i) = K(\text{line } 20) * \phi_{i,j} * \eta_i$$

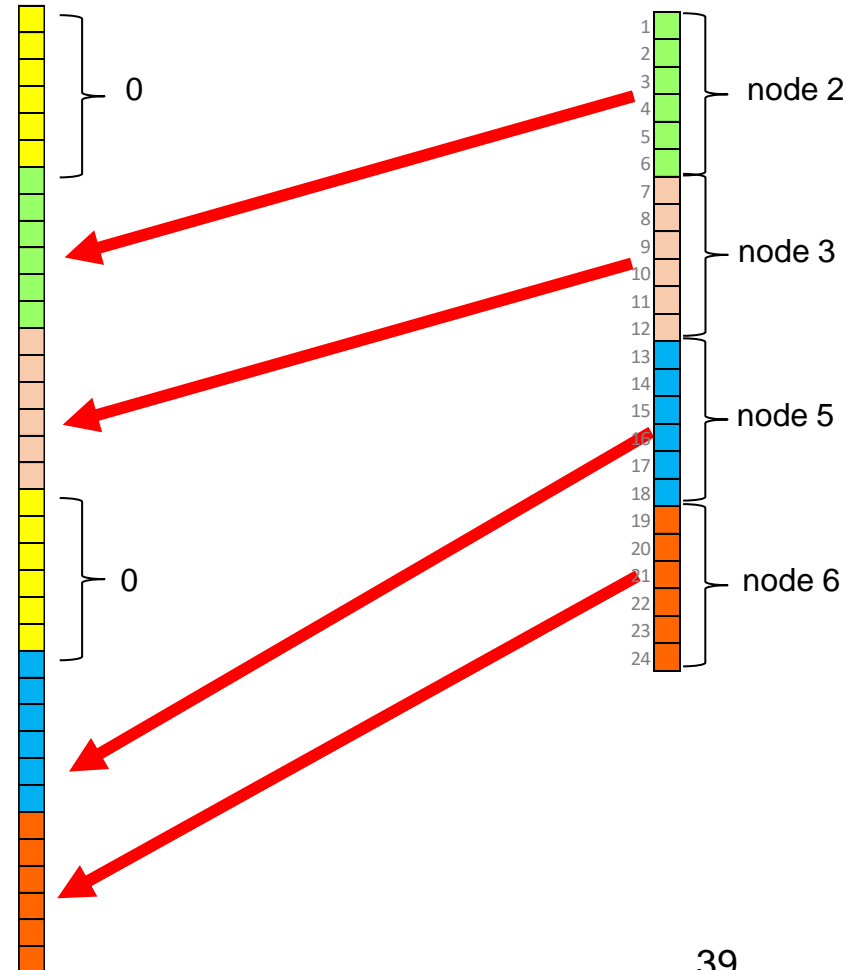
$(1 \times 36) \quad (36 \times 1) \quad (1 \times 1)$

$$R_{y,4,SRSS} = \sqrt{\sum_{i=1}^n R_{y,4,i}^2}$$

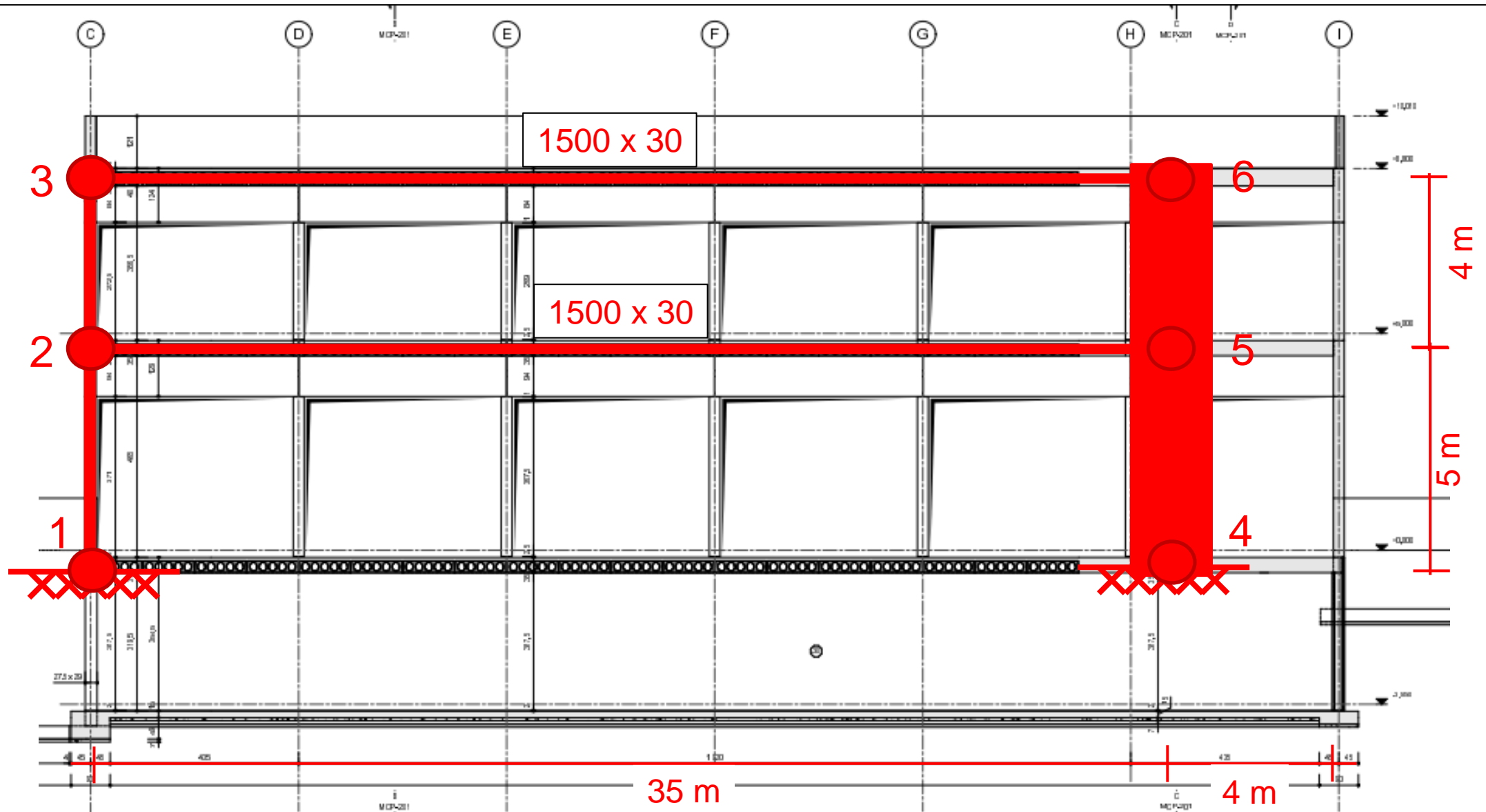
K matrix: 36x36



Calculated eigenmode 24x1



Results



Results – modal properties

Frequencies		fill in the yellow cells									
mode n°	freq (Hz)										
1											
2											
3											
4											
5											
6											
7											
8											
9											
10											
11											
12											

EFFECTIVE MODAL MASS					MODAL SHARE RATIO						
Number	freq (Hz)	MASS along. X	MASS along. Y	MASS along. Z	Number	freq (Hz)	RM. X	RM. Y	RM. Z	MODAL MASS	MODAL STIFFNESS
1	0.0000				1	0.00000					
2	0.0000				2	0.00000					
3	0.0000				3	0.00000					
4	0.0000				4	0.00000					
5	0.0000				5	0.00000					
6	0.0000				6	0.00000					
7	0.0000				7	0.00000					
8	0.0000				8	0.00000					
9	0.0000				9	0.00000					
10	0.0000				10	0.00000					
11	0.0000				11	0.00000					
12	0.0000				12	0.00000					

Results – Displacements

Response under X seims						Response under Z seims							
MODAL RESPONSE						MODAL RESPONSE							
=====						=====							
Number	freq (Hz)	PERIODE	ACCELERAT.	modal mass	RM. X	MODAL RESPONSE	Number	freq (Hz)	PERIODE	ACCELERAT.	modal mass	RM. Y	MODAL RESPONSE
-----						-----							
1	0.0000	#DIV/0!		0.00E+00	0.00000		1	0.0000	#DIV/0!		0.00E+00	0.00000	
2	0.0000	#DIV/0!		0.00E+00	0.00000		2	0.0000	#DIV/0!		0.00E+00	0.00000	
3	0.0000	#DIV/0!		0.00E+00	0.00000		3	0.0000	#DIV/0!		0.00E+00	0.00000	
4	0.0000	#DIV/0!		0.00E+00	0.00000		4	0.0000	#DIV/0!		0.00E+00	0.00000	
5	0.0000	#DIV/0!		0.00E+00	0.00000		5	0.0000	#DIV/0!		0.00E+00	0.00000	
6	0.0000	#DIV/0!		0.00E+00	0.00000		6	0.0000	#DIV/0!		0.00E+00	0.00000	
7	0.0000	#DIV/0!		0.00E+00	0.00000		7	0.0000	#DIV/0!		0.00E+00	0.00000	
8	0.0000	#DIV/0!		0.00E+00	0.00000		8	0.0000	#DIV/0!		0.00E+00	0.00000	
9	0.0000	#DIV/0!		0.00E+00	0.00000		9	0.0000	#DIV/0!		0.00E+00	0.00000	
10	0.0000	#DIV/0!		0.00E+00	0.00000		10	0.0000	#DIV/0!		0.00E+00	0.00000	
11	0.0000	#DIV/0!		0.00E+00	0.00000		11	0.0000	#DIV/0!		0.00E+00	0.00000	
12	0.0000	#DIV/0!		0.00E+00	0.00000		12	0.0000	#DIV/0!		0.00E+00	0.00000	

TOP displacements

Modal deformation at top

mode	node3 - X	node3 - Z	node6 - X	node 6 - Z
1				
2				
3				
4				
5				
6				
7				
8				
9				
10				
11				
12				

Top displacements under seism along X

mode	node3 - X	node3 - Z	node6 - X	node 6 - Z
1				
2				
3				
4				
5				
6				
7				
8				
9				
10				
11				
12				
SRSS				
CQC				

Top displacements under seism along Z

mode	node3 - X	node3 - Z	node6 - X	node 6 - Z
1				
2				
3				
4				
5				
6				
7				
8				
9				
10				
11				
12				
SRSS				
CQC				

Results – Reactions

<u>Support Reactions</u>							fill in the yellow cells						
Seims X							Seims Y						
node 1							node 1						
Support Reaction							Support Reaction						
	Rx	Ry	Rz	Mx	My	Mz		Rx	Ry	Rz	Mx	My	Mz
mode	[N]	[N]	[N]	[Nm]	[Nm]	[Nm]	mode	[N]	[N]	[N]	[Nm]	[Nm]	[Nm]
1													
2													
3													
4													
5													
6													
7													
8													
9													
10													
11													
12													
SRSS							SRSS						
CQC							CQC						
Seims X							Seims Y						
node 4							node 4						
Support Reaction							Support Reaction						
	Rx	Ry	Rz	Mx	My	Mz		Rx	Ry	Rz	Mx	My	Mz
mode	[N]	[N]	[N]	[Nm]	[Nm]	[Nm]	mode	[N]	[N]	[N]	[Nm]	[Nm]	[Nm]
1													
2													
3													
4													
5													
6													
7													
8													
9													
10													
11													
12													
SRSS							SRSS						
CQC							CQC						

Your report: pptx

1. Establish the static scheme of the structure
 - a. Simplify the structure to the lowest number of dofs possible to represent the dynamic behavior under earthquake. Use beam element.
 - b. Make some modification to improve the torsion behavior
2. Frequencies and eigen modes
 - a. Establish and Compute the stiffness matrix of the system
 - b. Establish and Compute the mass matrix of the system
 - c. Compute the eigen modes and the frequencies
 - d. Draw the deformed shape of the first 2 modes
3. Modal properties
 - a. Compute the modal stiffness and mass of each mode
 - b. Compute the effective modal mass in both horizontal direction
 - c. Compute the modal share ratio for both horizontal direction
4. Parasismic calculation
 - a. Establish the design acceleration spectrum according to EN 1998-1
 - b. Compute the response (displacements) of each mode in each direction
 - c. Compute the maximum response in each direction (SSRS and CQC) of the building top
 - d. Compute the support forces
 - e. Combine the support forces in the X and Y direction
 - f. Compare results from different static scheme